

Debian Edu / Skolelinux Rosegarden manual

June 3, 2017

Contents

1	Rosegarden manual	1
2	Before you start	1
3	How to make the midi and audio record work	1
3.1	JackSetup Example	4
3.2	How to fix recorded audio files	4
3.3	How to set up Qsynth for emulated midi sound	5
3.4	other plugins you probably want	5
3.5	Other devices that are compatible with Linux	6
4	Rosegarden Audio/Midi Sequencer introductions	7
4.1	Instrumental index.	8
4.2	Midi setup	10
4.3	how to change bank select.	11
4.4	How to make rosegarden to automatically put controller and program change in the start of your segment, for exported midi	12
4.5	how to add a new midi device	12
4.6	Placing your audio file for your new project	13
4.7	How to sign your melody	14
4.8	How to use Score editor to set controllers	15
5	how to change, edit, improve a recorded midi segment	15
6	Quantize	16
6.1	Grid Quantize	16
6.2	Legato Quantizer	17
6.3	Heuristic notation quantizer	17
7	Note edit	18
7.1	howto get specifications in the notations editor	20
7.2	how to change clef	21
7.3	How to change key	22
7.4	how to change note volume on a recorded segment.	22
7.5	How to make the note play after your inserted marks in score editor	23
7.5.1	Interpret functions in the score editor	23
7.6	How to split segment for grand staff	23
7.7	Setting notes manually, and step recording	23
8	Rosegarden timer is unstable	24
9	how to change tempo in Rosegarden	25
9.1	Insert Tempo Change	26
9.2	Insert Tempo Change at Playback Position	26
9.3	Ramp Tempo to Next Tempo	26
9.4	Edit Tempo	27
9.5	Edit Time Signature	27
9.6	Open Tempo And Time Signature Editor	28
9.7	how to turn of metronome click	29
9.8	Music made with rosegarden	29
10	Sound creation for your music project	29
10.1	Configuring Swami to use Jack	30
10.2	How to make a sound	31
10.3	Sample Tuning for Advanced Users	33
11	Copyright and authors	33
12	Translation copyright and authors	33

13 Translations of this document	34
13.1 HowTo translate this document	34
14 Appendix A - The GNU Public License	34
14.1 Rosegarden manual	34
14.2 GNU GENERAL PUBLIC LICENSE	35
14.3 TERMS AND CONDITIONS FOR COPYING, DISTRIBUTION AND MODIFICATION . . .	35

1 Rosegarden manual

This is a manual for rosegarden, based on the 1:1.4.0-1 version from the Debian Edu Etch 3.0 release.

The version at <http://wiki.debian.org/DebianEdu/Documentation/Manuals/Rosegarden> is a wiki and updated frequently.

Translations are part of the debian-edu-doc package, which can be installed on a webserver, and is available [online](#).

2 Before you start

Before you start with rosegarden. Be sure you have gone through the documentations how to get jackd running smoothly. That is the technical part that has to be in place so rosegarden can work as it should.

I recommend that you get installed a Real Time kernel, this way you get better latency on jack, and you will not experience too much lag on the softsynth when you are playing.

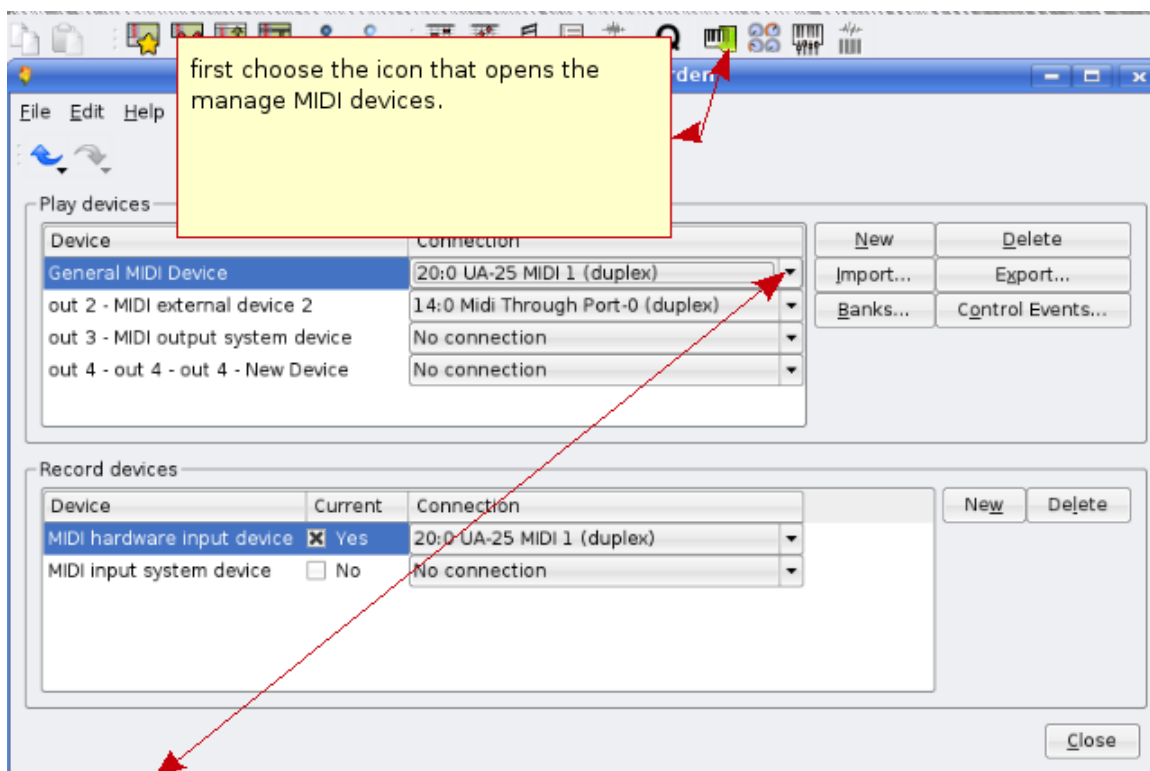
3 How to make the midi and audio record work

To make only the midi to work in Linux, I recommend you to buy a USB midi interface from Roland Edirol series.

If you only want midi, you can buy Roland UM-1EX, you can also only search for "um-1ex" on your favorite search engine, or just buy it on your favorite music store. This USB device supports only midi, there is no driver to think about, you just plug it in, and it will automatically be detected by your system. Click on the link to see how the device looks like:



Under Rosegarden you probably have to choose this device.



And then with the drop down menu you choose to use your midi device, UA-1EX or UA-25, and if you have a sound card, that is suportet, and have midi connections, you will probably get that devices as a choise to.

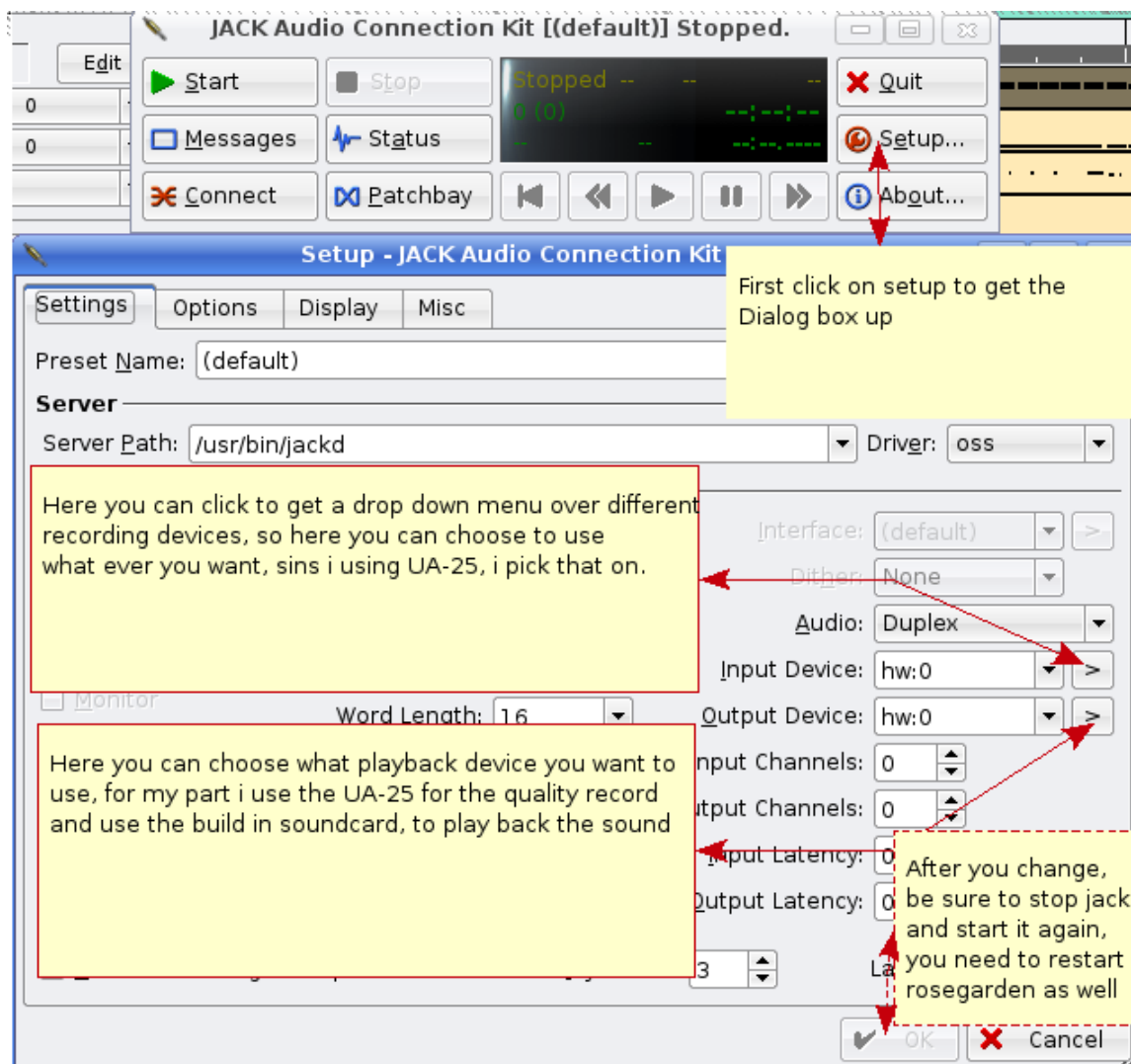
If you want to use rosegarden fully, with sound record, I also recommend Roland's Edirol UA-25. That device can record high quality sound through the USB port, and again, you don't have to think about drivers, you just plug it in, and Linux will automatically detect it.



This device also has a midi interface, so you get the full package on the same device, but of course this device is more expensive than um-1ex.

This device has some features that you should keep in mind, on the setting 48,44 kHz you can use playback and record at the same time on the device, but if you set the device to 96 kHz, the device only work as a playback, or a record device. So if you want to hear what you play while you record on the 96 kHz setting, you have to configure jack to use the integrated sound card as playback device, and UA25 as a record device, but this can give you problems with Xrun.

To set up this device you can use jackd, that you find under -> Multimedia --> jack control. if you do not find jackd on your menu just install "aptitude install qjackctl"



Lets take an example, the first thing you want to record, is the midi segments, (plug in right and left audio channel from your synth to UA25) then you have to remember to shut down the metronome click, you don't want that on your recorded wav file. And after you have done this, you can then mute all midi segment, and only listen to the wav file you made, then you simply unplug the synth, and plug in your guitar, Mic, and easy record guitars, Vocal, and so on to your masterpiece.

If you get `alsa_pcm: xrtn problem`, take a look at the messages in the start how the device been start up. There are many reasons that this not wanna work as it should. If your integrated card does not handle 24 bit, you will get into some problem, and you have to turn the advance mode OFF on the UA-25 device, so it goes down to 16Bit with the integrated sound-card (but then the midi will not work on UA25). If ALSA still gives you problems, try to run the OSS instead. If your integrated sound card does not support 48.000, you have to turn UA-25 down to 44.100. Remember that you have to unplug usb, and do the change on device, and then plug in the usb again before the changes take effect. This is some thing you could try to get alsa running smooth. Try activate the RT in Jackd, and if you cannot activate the RT (real time) in jack you have to add this followings line in

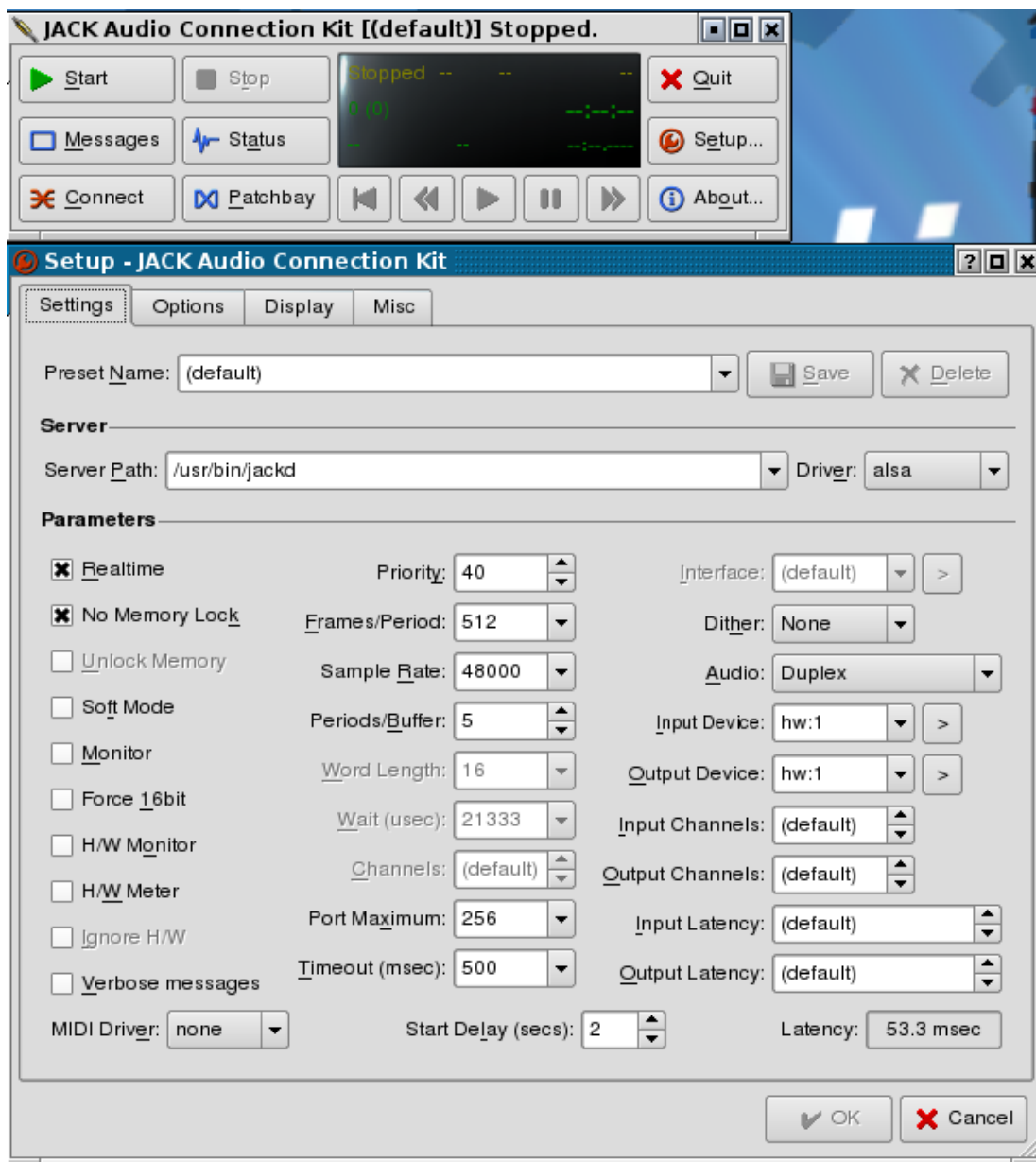
`/etc/security/limits.conf` file

I have experienced that some devices don't like the RT options activated and runs better with RT off in jack.

```
@audio - rtprio 99
@audio - memlock 500000
@audio - nice -10
```

This options can be dangerous because it can cause the kernel to dead lock, due to priority problems.

3.1 JackSetup Example



You see the latency is about 53.3 ms, that is the lowest I can get on my laptop without jackd starting to complain about Xrun problem. You have several ways to change the latency for the best optical way for your computer, and that is

Frames/periodes (16-4096)
Periodes/buffer (1-xxx)

3.2 How to fix recorded audio files

Take in use Audacity, I have made a documentation that help you to get started. First you just double click on the audio segment, and audacity should start automatically and load the segment you have chosen.

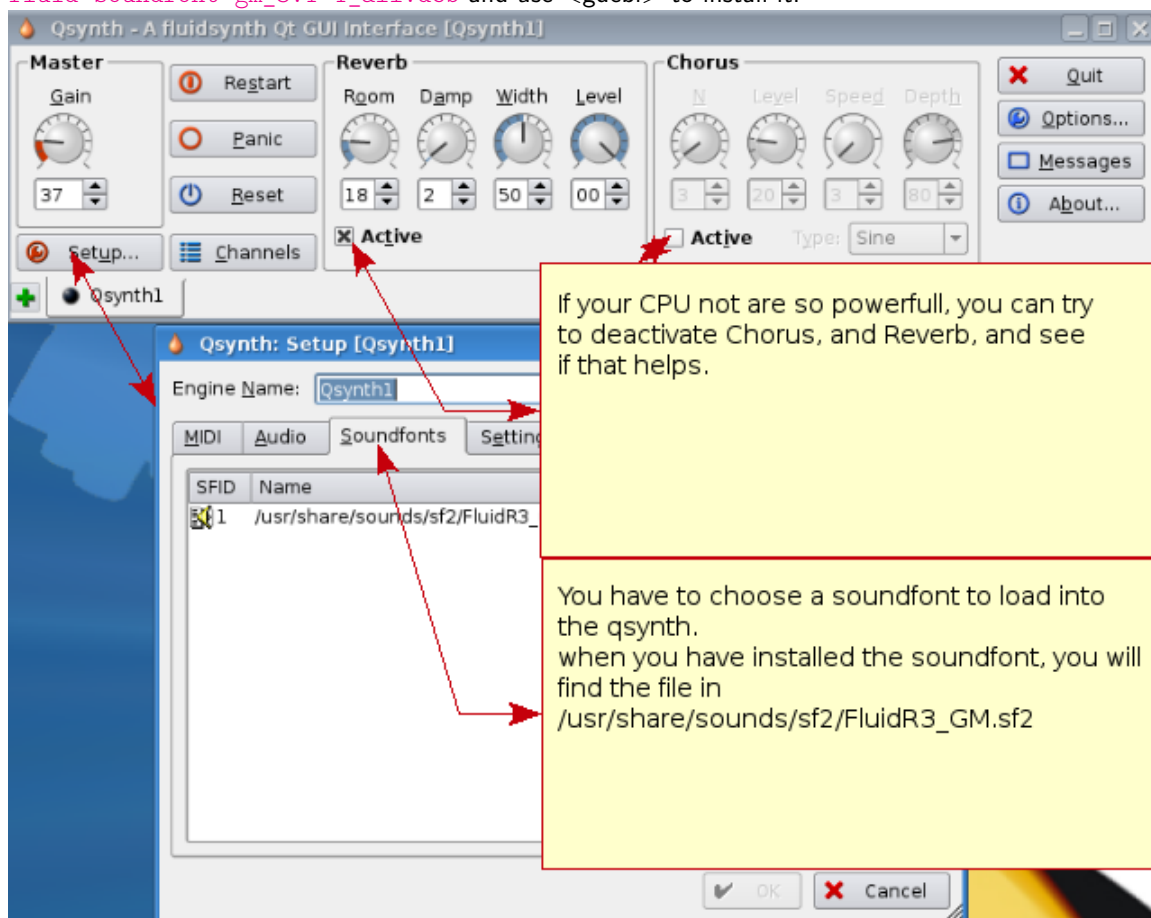
<http://wiki.debian.org/DebianEdu/Documentation/Manuals/Audacity>

MARK!

When you have done the changes on the audio file, remember to save it with the same name, and then you have to save the project in rosegarden, and reopen your project. This way you will get the changes you did in audacity applied onto rosegarden

3.3 How to set up Qsynth for emulated midi sound

For those who don't have a keyboard/synth can use qsynth to get midi sound on rosegarden. You can download soundfont from here: ftp://ftp.no.debian.org/debian/pool/main/f/fluid-soundfont/fluid-soundfont-gm_3.1-1_all.deb and use <gdebi> to install it.



Do not forget to choose that you want to use the qsynth in the device manager on rosegarden if not rosegarden automatically have chosen this.

3.4 other plugins you probably want

There is a list of plugins you want in rosegarden when you don't have a gm keyboard/synth, but only a keyboard that send midi, use the aptitude command to get it.

** synth plugins **
wsynth-dssi
xsynth-dssi
nekobee
ll-scope
cmt
hexter
fluidsynth-dssi
tap-plugins

sineshaper

fixme: set inn synth plugins you have good experience with

** audio Plugins **

swh-plugins

mcp-plugins

terminatorx

fixme: put on some audio plugin you have experience with

3.5 Other devices that are compatible with Linux

These have been tested with skolelinux 3, kubuntu 7.10, kubuntu 8.04 and with kernel 2.6.22.16, and 2.6.24.18

Device	extra install, needs depends
Roland edirol UA-25	Works without any problem
Roland edirol UA-25EX	Does not work with Advance modus on, switch it to off. Mark! The MIDI part will not work, only audio with advance off. So go for UM-1 to communicate with your MIDI device instead for example
Yamaha MM6 Synth	The MIDI usb, work without any problem on Linux systems
Roland edirol um-1	Same as Ediro UA-25
Roland edirol Um-3ex	Usb To Midi
Roland edirol Studio Canvas, SD-20	Gm/xg lite Midi sound-module
M-Audio Midispor 4	Midi-USB 2x IN 4x OUT
M-Audio Key stations 49e	usb-midi keyboard
M-Audio Axiom 25	Usb Midi Keyboard
M-Audio Trigger Finger	Usb Drum pattern
M-Audio Fast Track Pro	Usb, Midi And Audio
Samson Gtrack (GM1U)	Usb Mic
Zoom, ZFX, plug-in	Audio Record, no Midi
Edirol Midi Keyboard Controller PCR-300, 500, 800	Usb Midi Keyboard
Roland FP-5 (digital piano)	Usb Works, and the piano also have midi inn/out

Thanks to Mario Music for allowing me to be in their store testing this equipment.

Fixme: add devices you have experienced to work with out any problem

Devices that have been found not working for now

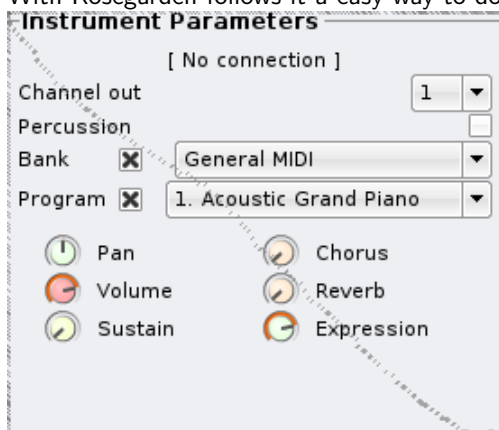
Devices	Problem
Echo Audiofire 2, 4, 8, and 12	fireware card, they where detected but they where not cooperative, jackd where not able to start them
Tone Port Ux2 (line6)	Did not work
Audio Control 1	Jackd find out about the card, but the card will not work as is should
Roland UA-4FX	Jackd finding this also, but are making trouble
Mbox2	jackd find it, and it runs, but producing allot of Xrun
Yamaha KX	usb midi keyboard do not work trough usb, but there are midi in and out on this

If everything works, it's time to take a look at the rosegarden documentation here: <http://wiki.debian.org/DebianEdu/Documentation/Manuals/Rosegarden>

4 Rosegarden Audio/Midi Sequencer introductions

url:<http://rosegardenmusic.com/>

Rosegarden Audio/Midi Sequencer. Music creations without limit. Midi (Musical Instrument Digital Interface), Is a perfect way to build up music instrument by instrument. The Important of building up the midi song with structure are important because when you try to export the midi file to other then rosegarden, will make the chance for the midi file to work on others computer, synth/keyboards and so on much bigger. With Rosegarden follows it a easy way to do this as you can see below:



That is okay to use, IF you held your project to Rosegarden, My experience with this is when you try to export your midi to other applications, something will not work as you attend to.

This can sound difficult and time consumed, but if you are bit structured, and made the setup file at hand, you have everything ready for your next project without any delay. I have made ready one file like this for you, just download it(you find it below) I have also made a guide how to use this. With structure on your midi I mean the following thing: You set the standard for every midi file you make where you put your instruments. The example that follows on my file is:

- Track 1 = piano
- Track 2 = Bass
- Track 3 = Guitar (muted, clean and so on)
- Track 4 = Melody

Track 5 = second voice

Track 6-9 = here you can set up, strings, clarinet, oboe, sax, and so on.

Track 10 = Drum, this is always drums, this is standard in GM setup.

Track 11-16 = same as 6-9.

If you follows this setup on your every midi sound, there will not be any problem to made new melody.

4.1 Instrumental index.

No.	Instruments	No.	Instruments	No.	Instruments	No.	Instruments
1	Ac. Grand Piano	34	El. Bass finger	67	Tenor Sax	100	FX 4 (atmosphere)
2	Bright Ac. Piano	35	El. Bass pick	68	Baritone Sax	101	FX 5 (brightness)
3	El. Grand Piano	36	Fretless Bass	69	Oboe	102	FX 6 (goblins)
4	Honky-tonk Piano	37	Slap Bass 1	70	English Horn	103	FX 7 (echoes)
5	El. Piano 1	38	Slap Bass 2	71	Bassoon	104	FX 8 (sci-fi)
6	El. Piano 2	39	Synth Bass 1	72	Clarinet	105	Sitar
7	Harpsichord	40	Synth Bass 2	73	Piccolo	106	Banjo
8	Clavi	41	Violin	74	Flute	107	Shamisen
9	Celesta	42	Viola	75	Recorder	108	Koto
10	Glockenspiel	43	Cello	76	Pan Flute	109	Kalimba
11	Music Box	44	Contrabass	77	Blow Bottle	110	Bag Pipe
12	Vibraphone	45	Tremolo Strings	78	Shakuhachi	111	Fiddle
13	Marimba	46	Pizz. Strings	79	Whistle	112	Shanai
14	Xylophone	47	Orch Harp	80	Ocarina	113	Tinkle Bell
15	Tubular Bells	48	Timpani	81	Lead 1 (square)	114	Agogo
16	Dulcimer	49	String Ens 1	82	Lead 2 (saw-tooth)	115	Steel Drums

17	Drawbar Organ	50	String Ens 2	83	Lead 3 (calliope)	116	Woodblock
18	Perc. Organ	51	Synthstrings 1	84	Lead 4 (chiff)	117	Taiko Drum
19	Rock Organ	52	Synthstrings 2	85	Lead 5 (charang)	118	Melodic Tom
20	Church Organ	53	Choir Aahs	86	Lead 6 (voice)	119	Synth Drum
21	Reed Organ	54	Choir Oohs	87	Lead 7 (fifths)	120	Reverse Cymbal
22	Accordion	55	Synth Voice	88	Lead 8 (bass+lead)	121	Fret Noise
23	Harmonica	56	Orchestra hit	89	Pad 1 (new age)	122	Breath Noise
24	Tango Accordion	57	Trumpet	90	Pad 2 (warm)	123	Seashore
25	Ac. guitar nylon	58	Trombone	91	Pad 3 (polysynth)	124	Bird Tweet
26	Ac. guitar steel	59	Tuba	92	Pad 4 (choir)	125	Telephone Ring
27	El. guitar jazz	60	Muted Trumpet	93	Pad 5 (bowed)	126	Helicopter
28	El. guitar clean	61	French Horn	94	Pad 6 (metallic)	127	Applause
29	El. guitar muted	62	Brass Section	95	Pad 7 (halo)	128	Gunshot
30	OverDr. Guitar	63	SynthBrass 1	96	Pad 8 (sweep)		
31	Dist. Guitar	64	SynthBrass 2	97	FX 1 (rain)		
32	Guitar harmonics	65	Soprano Sax	98	FX 2 (sound-track)		
33	Acoustic Bass	66	Alto Sax	99	FX 3 (crystal)		

And that was the index of the instrument, below you have the index over the Percussive instruments (drums)

No.	DrumKit	Uses
1	Standard GM kit 1	Everything

2	Standard GM kit 2	Same as 1
10	Rom Kit	Pop Ballads
17	Power Set	Rock, hard rock
25	Electronic kit	Ballads
26	Analog kit	Also used in ballads
27	Dance Kit	Uses in Dance, Teckno
28	Dance Kit 2	Same As 27
33	Standard GM kit 3	Same as 1,2 and 74,75
41	Brush/jazz kit	Uses in jazz, or ballads
49	Orchestral Kit	Uses in classical music
57	Effects Kit	Uses to make effects around your melody
65	Percussion kit 1	
66	Percussion kit 2	
74	Standard Gm Kit 4	
75	Standard Gm Kit 5	

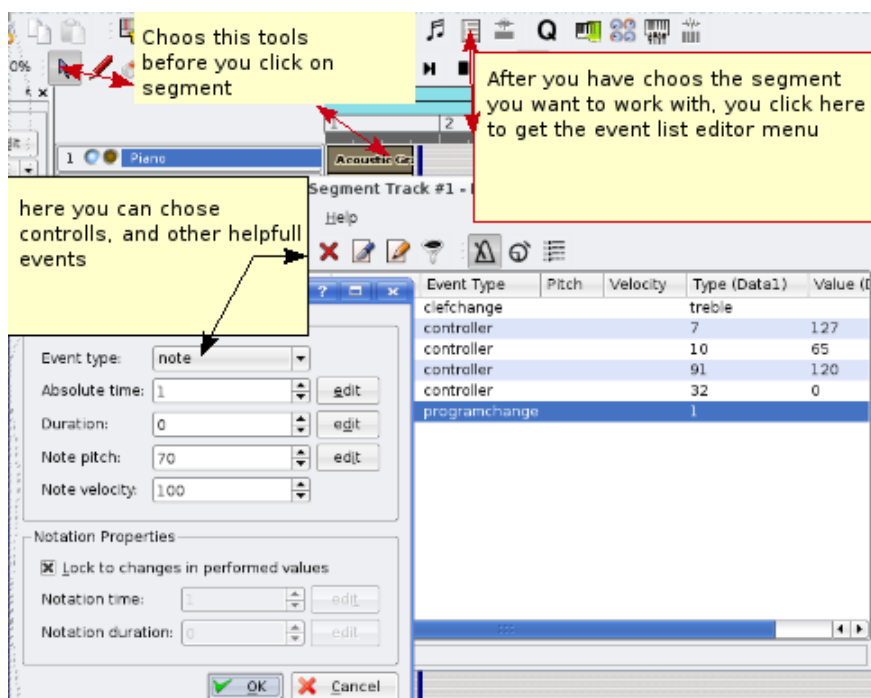
No.: representing the Programchange

4.2 Midi setup

Midi setup, in this case midisetup.rg file will I show you how to change settings. I will introduce you to some controllers that you will find usefully to your midi setup

No.	Controller	What does the controller do
7	Volume	This sets the volume on the midi track 0 if lowest setting, 127 is the loudest setting
10	Balance	This controls sett the balance on the midi track, 0 is for the left side, and 127 is right, 65 is center
32	Bank Select	This controller select the different sound banks on your synth/keyboard "LSB" (fine) bank select
0	Bank Select	This controller is the MSB (coarse) bank change

91	reverb	This sets the room size on the midi track, 0 is for no acoustics, and 127 for max acoustics
----	--------	---



With this out of the way, you have setup a structured setup of the midi segment that tells your synth/keyboard what it should do. And then you simply can export the midi to any devices you want, even mobile phone.(if the mobile supports polyphonic midi)

here you can download the finish setup file

midisetup.rg

4.3 how to change bank select.

Sometime you wish to use different sounds on your Synth/keyboard that not belong in the GM standard, then you have to use controller that take care of this. Controller 0 and 32.

This functions are taken in use if you also want drums on other tracks then 10. Example percussion effects on tracks 16, that my favorite tracks to use for this functions. Then with controller 32 on data1, and number 4 on data2, changes what track 16 should do, in this case drums. And then with program change 57, will that track change to effect kit.

Controller 0 and 32, with number 0, is gm standard, use it on tracks 1-9, 11-16

Controller 0 and 32, with number 1-127 are those different banks, used on track 1-9, 11-16

Controller 32, with number 4, are for mine synth drums, that is use for standard on track 10, and on special need on any track you to your liking.

Yamaha keyboard with Gm2/Xg have some more options, I recommend you to read the manual that gives you the complete overview of the instrument on your keyboard, and there also says what banks the instrument exist on.

Let me take one example for you:

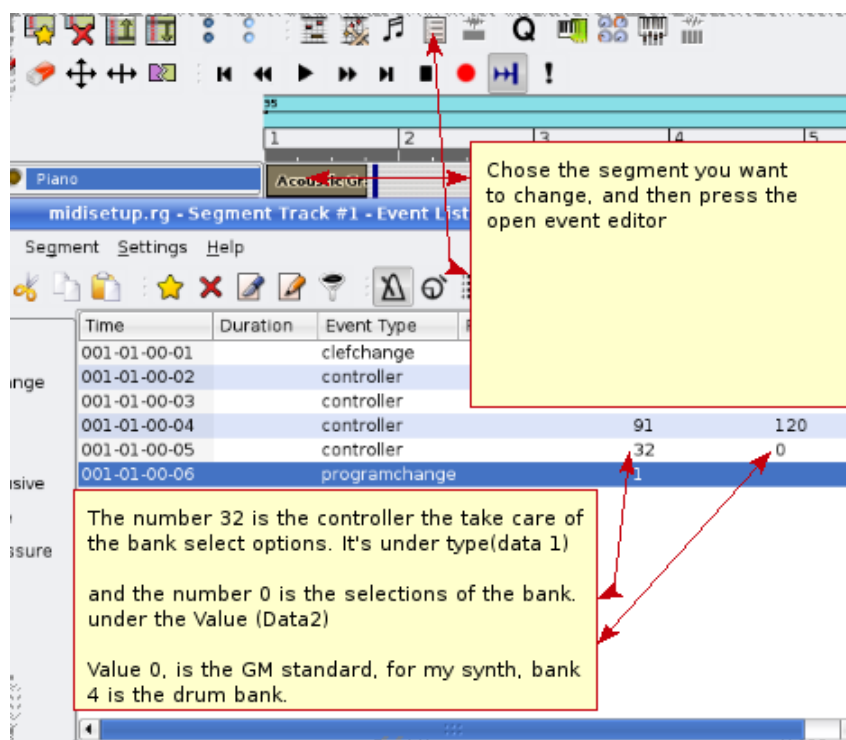
my keyboard have a instrument on controller 0(MSB) on value 8, and in controller 32(LSB) on value 1, and last on program change 3.

so the following is,

controller 0 with value 8

controller 32 with value 1

and last the program change with value 3



the order on when controller 0 and 32 and program change comes are important
remember that controller 0 and 32, have to come BEFORE program change.
 i have included this in the standardupsetfile.

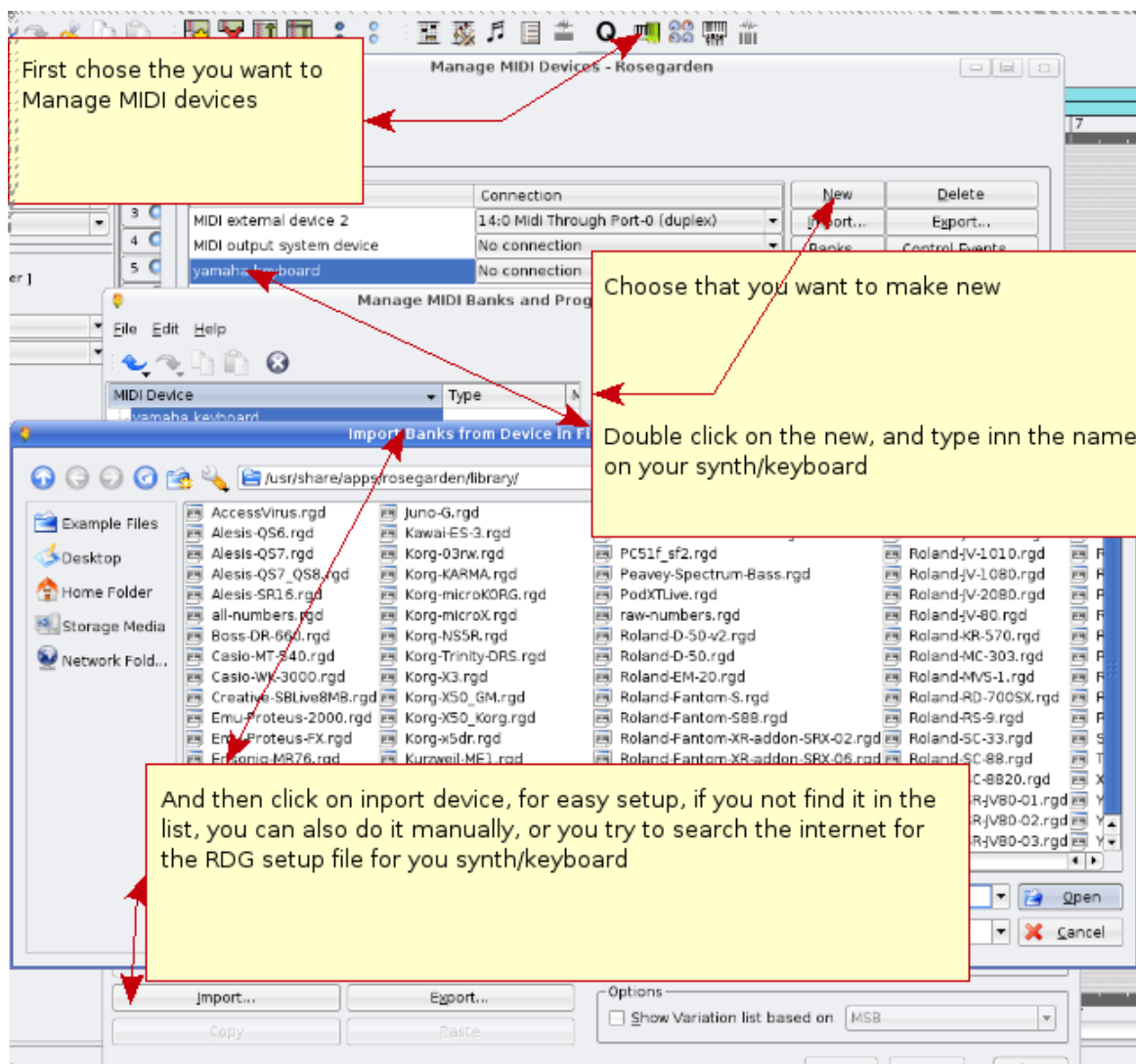
4.4 How to make rosegarden to automatically put controller and program change in the start of your segment, for exported midi

This is actually something I just found out. You use the instrument parameter to have the reverb, volume you want, and then the trick is to press a key on your keyboard when rosegarden count up for you, so you actually get one note in the count in before record. You can do this on every segment. And when you export the song to midi, the info will automatically be put inn. The only thing is, that you have to import the new midi file you made, and remove the note you don't need and save it again.

As I said, this is not necessary if you just held your project as a rosegarden file.

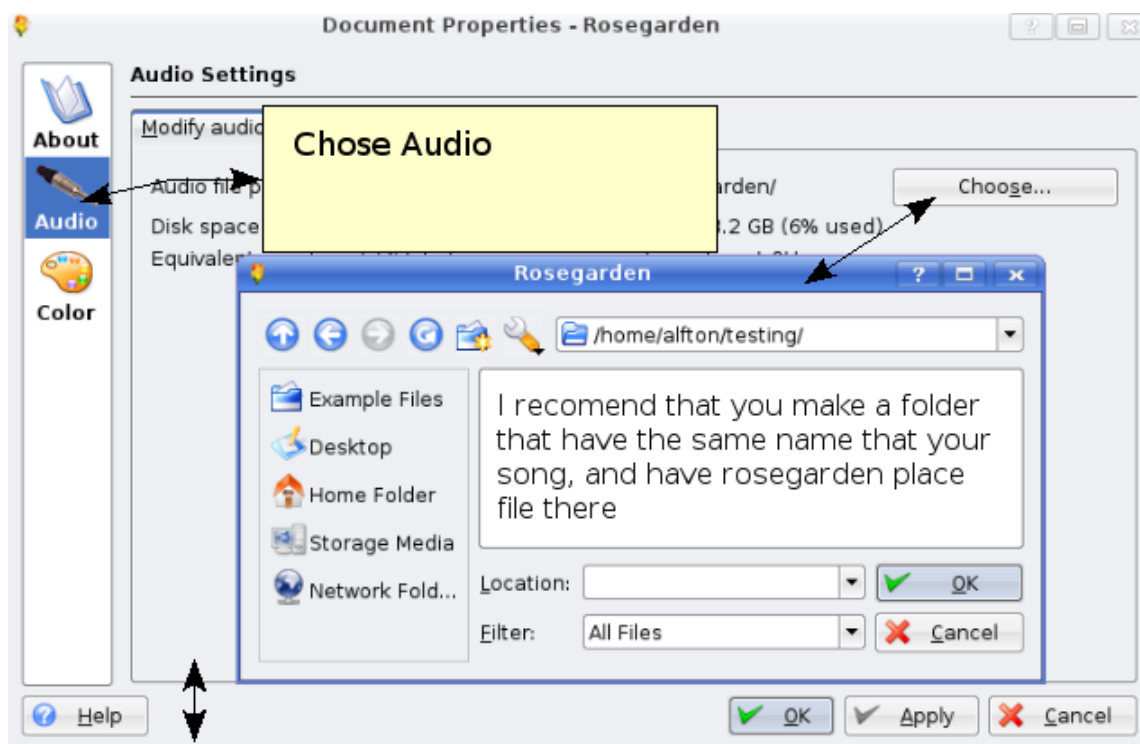
4.5 how to add a new midi device

All synth have many sounds, and you will not get to all the sound that are available with the GM only on the "quick instrument parameter pick". So if you follow this way you can try to add your synth/keyboard as your default device, and take in use all sound that lives in your keyboard/synth. New devices are added on new releases of rosegarden, so if you not find your own device here, you can just wait to see if it show up, or you can help the rosegarden project and make the instrument indexing your self, and simply send the *.rgd file to them, and at the same time join the rosegarden list: <http://rosegardenmusic.com/support/lists/>



4.6 Placing your audio file for your new project

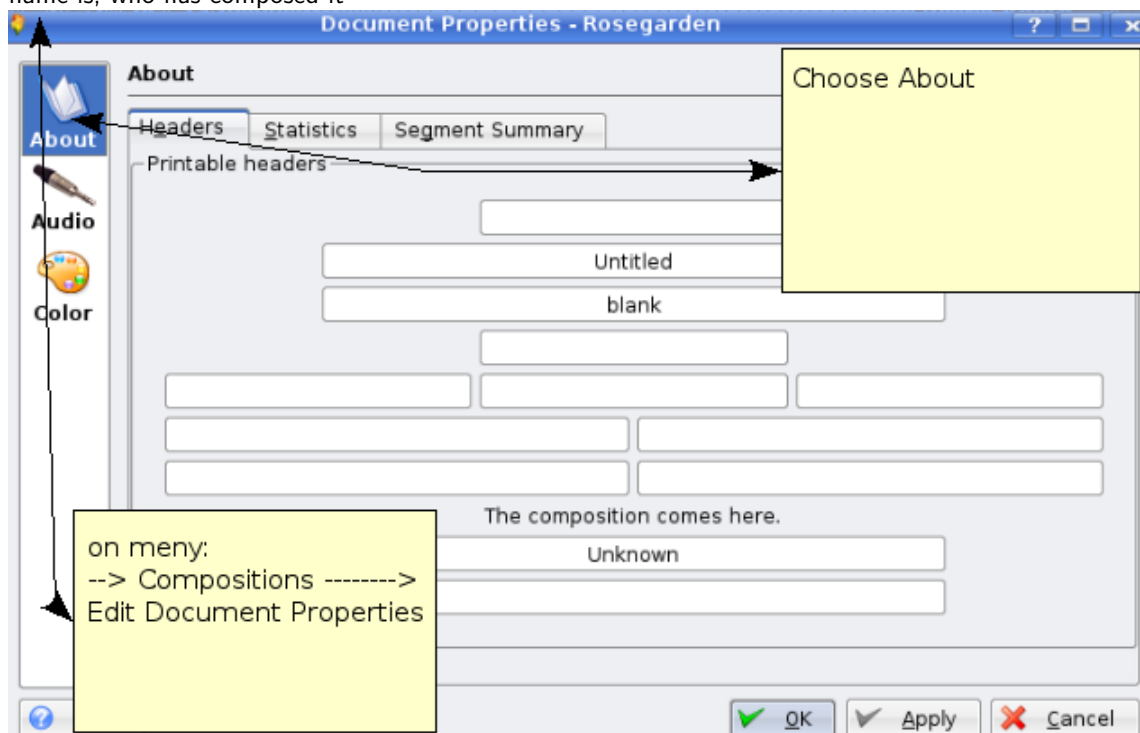
It's very important to be strict when there comes to where you placing your recording live instruments, vocals. Because without that you will after a while get problem to find what files you are working on. it's not impossible, but without any structure on it, you will use a lot of time to find it. So let's say you have made yourself a new midi melody "shallala", and you want to record your vocal on it, then you just remember to make a director that has the same name as your melody, and place your recorded audio in there.



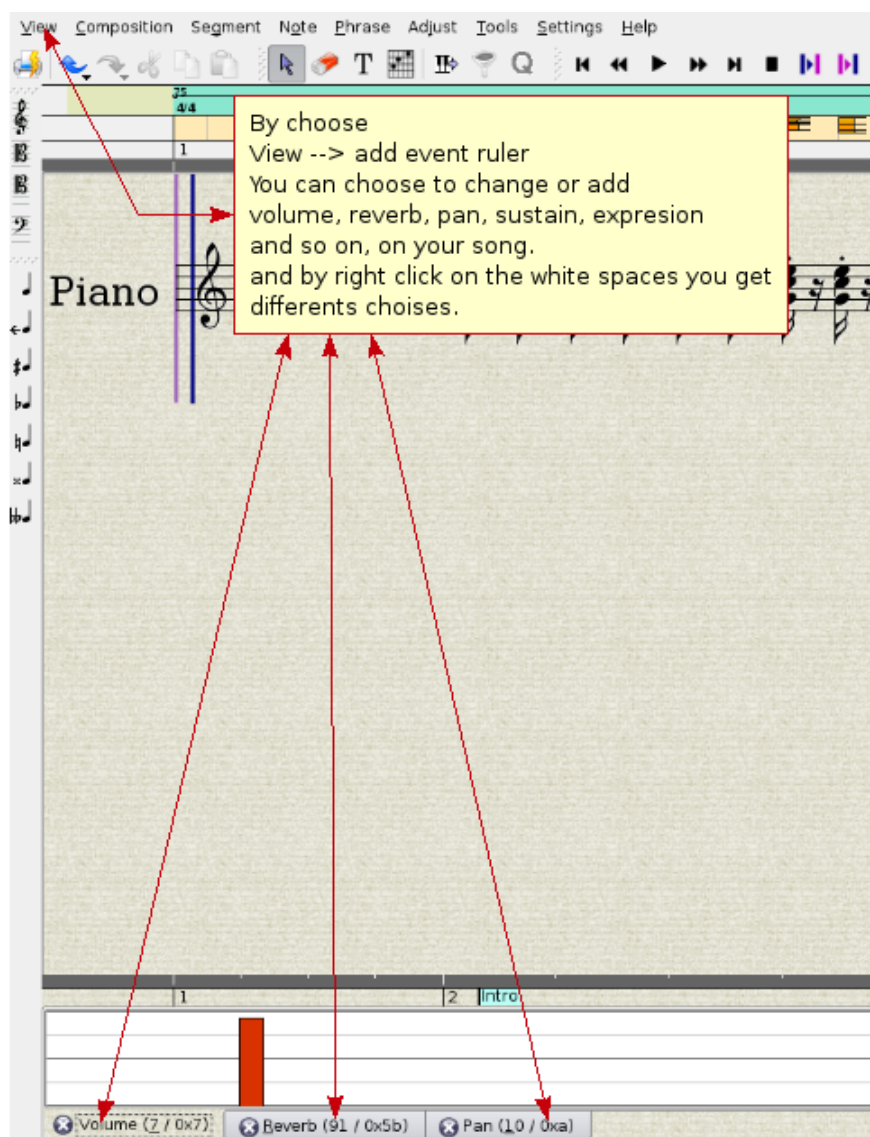
Choose --> "composition" ---> and then "edit document properties"

4.7 How to sign your melody

You want to tell everybody the you have made this tune, so below you see how you can add what the song name is, who has composed it

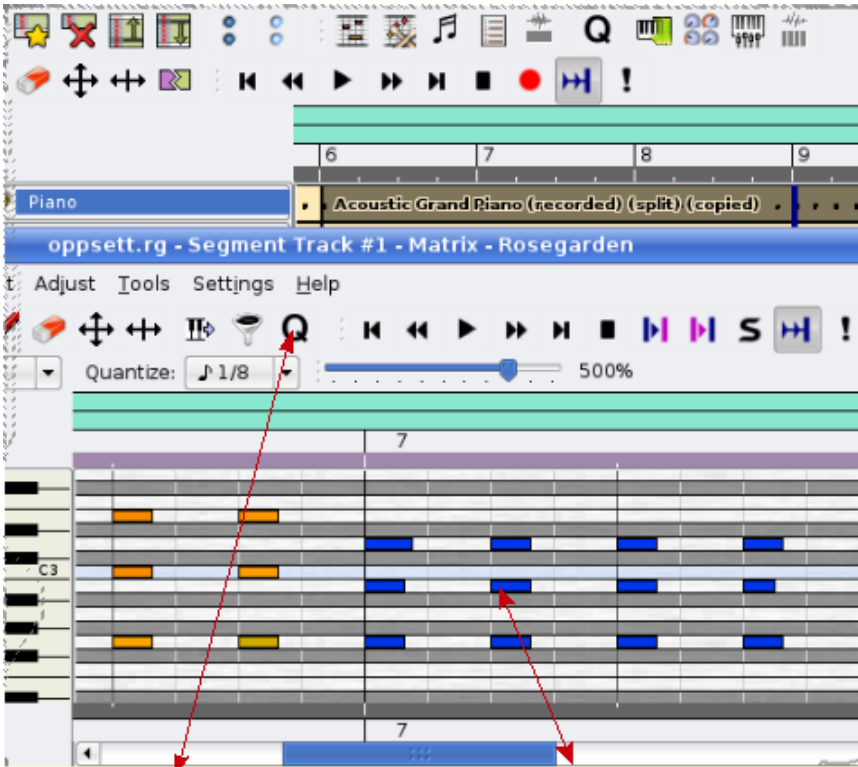


4.8 How to use Score editor to set controllers



5 how to change, edit, improve a recorded midi segment

When you have play some part in the segment, will there always be something you want to correct up. So instead of play everything from start again, you have many possibility to change and edit everything to the better. First I'm gonna introduce you to the use of the Matrix Editor.

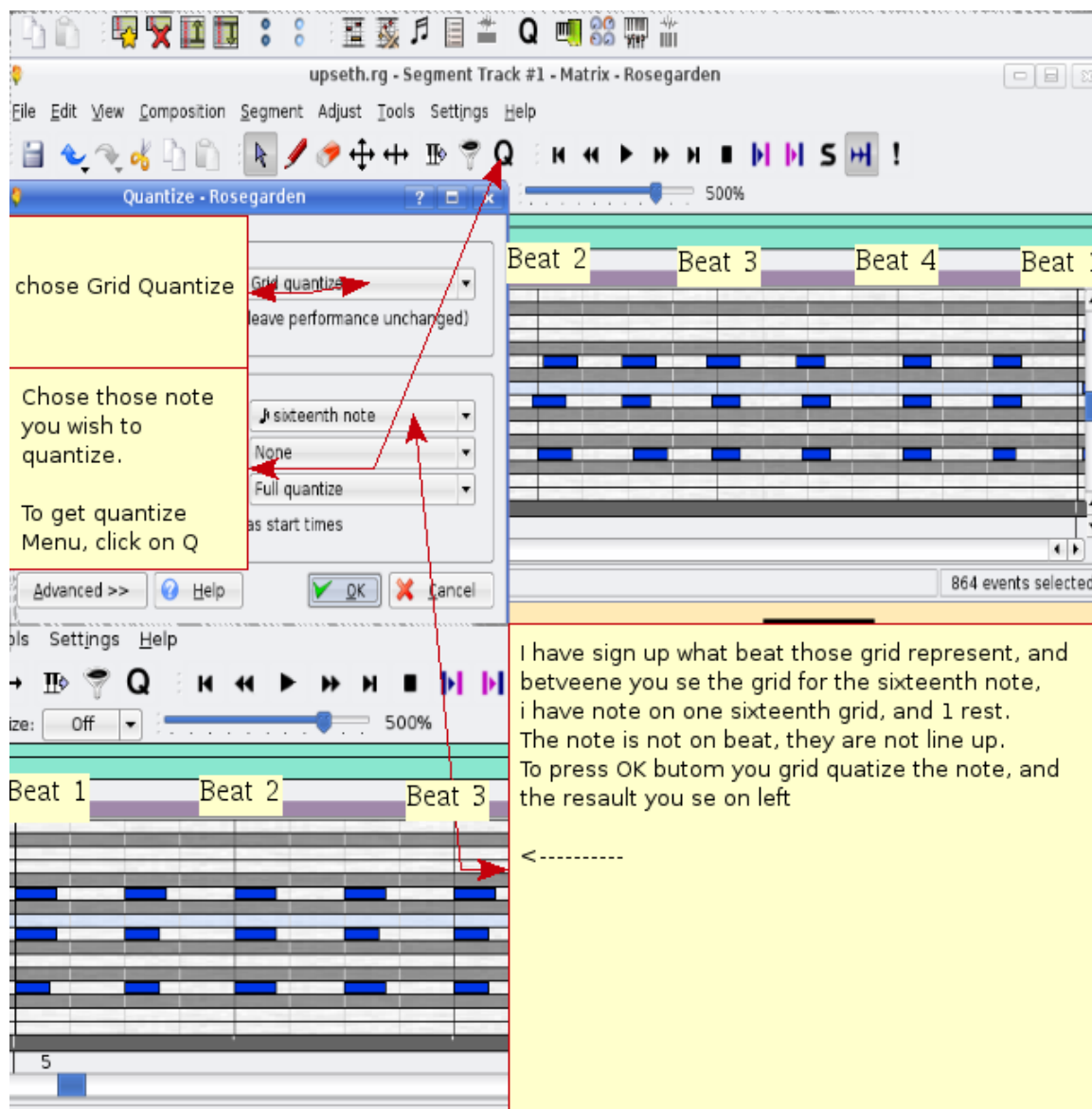


As you can see, those 12 blue marked segments can be changed by holding down your left mouse button and dragging it over the note you wish to change. And with the help of the <--|--> button you can change the length of the note manually. But with the Q button (quantize) function you can save yourself a lot of work, I will show you some of the functions below.

6 Quantize

6.1 Grid Quantize

This function has several possibilities; after a played segment you sometimes miss the beat, here is where the Grid Quantize comes in the picture. It's useful to get notes right on the beat automatically.



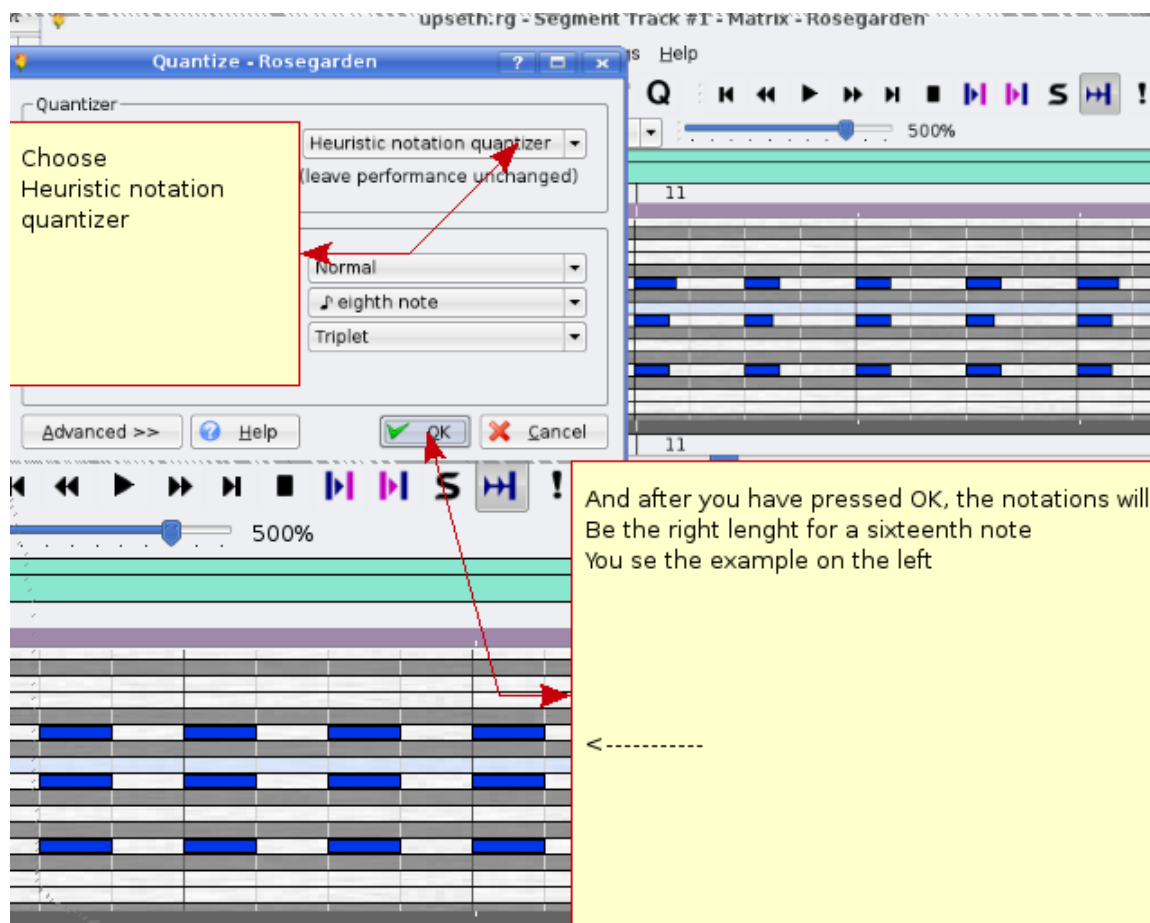
To use this the right way, can save you from a lot of work. You have to try out different way, there are always the possibility to undo the quantize if not goes as intended. So there is only just to try again with a different setting on the base grid unit. You have to try out different setting, and you will find one that fits you needs best. There are many possibility.

6.2 Legato Quantizer

with this you with one keystroke change a staccato played part to legato.

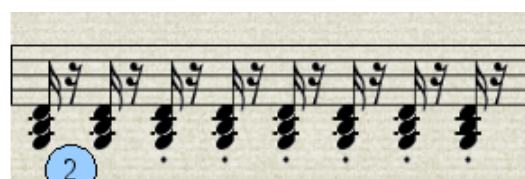
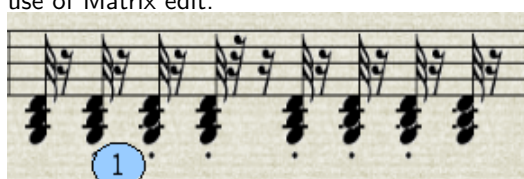
6.3 Heuristic notation quantizer

and other Quantizer that you will find usefully are heuristic notation quantizer. This help you to make your played note to the right length. This is mostly used to fixing up on the notations preview. And make the note more easy to read for the musician.



As you can see, with this method, the length of the note is changed to the right length for a 16th note, and that should be played staccato. And that will change the notations to be better in the Score Editor.

Number 1 shows you how the notations were before Quantize, and number 2 is after. Number 2 is more easy for the musician to read than number 1. And at the same time, number 1 is more confusing with 32 quantized notes, and some different rest notes. Number 2 is more clean, and will at mostly be played the way I intended it to be played. There is one thing that it sounds great on MIDI, but if you want to publish your notations to orchestra or band, you have to take your time and clean up your notes. That was a short introduction to the use of Matrix edit.



7 Note edit

Note edit is a powerful edit tool to make your notations ready for pianist, orchestra, band, you have the tool to make different marks that tell the musician what he should do, how fast, how hard, how soft, tempo changes and more. I'll introduce you to some of the features with the note edit. The first picture is before:



you see a clean notations, there is noting that tells what you want how the notes should be played. After I have worked with the notations, here is the result:

Moderato

Piano

4/4

G F G C

f p pp ff

mf ff f

Now I have got what speed, hardness the notations should be played with. At the same time I have change the note to bind together, I also change the note length in the matrix editor to eight-note, so it would be easier for the pianist to read, but the piece will still actually be played as I want it to with a better success, and the notations take less space. Let us see closer how I got this marks in the notations.

7.1 howto get specifications in the notations editor

By Clicking on the T, you get The Text Editor menu up that you se on the right Here youcan set inn some info on the notations

You can choose from the drop down menu that you want to set in Tempo

You can also choose like i have, dynamic ad choos from the drop down menu what strenght you want the melody be played in.

There are also possible to set in cord I advise you to take a look of all the possibility on the Style Drop down menu and after take a look on the Drop down menu under.

Moderato

f *p* *pp*

ff *mf*

This guide show you how to set in usefully informations to the musician how you compositions should be played, Tempo, volume and what accord. That only a part of this tool, there are still much more. The picture show you how to make the note bind together, and how to put a crescendo, decrescendo on the notations.

Choos this tool before you Mark the note you want to put the marker, this case decrescendo,

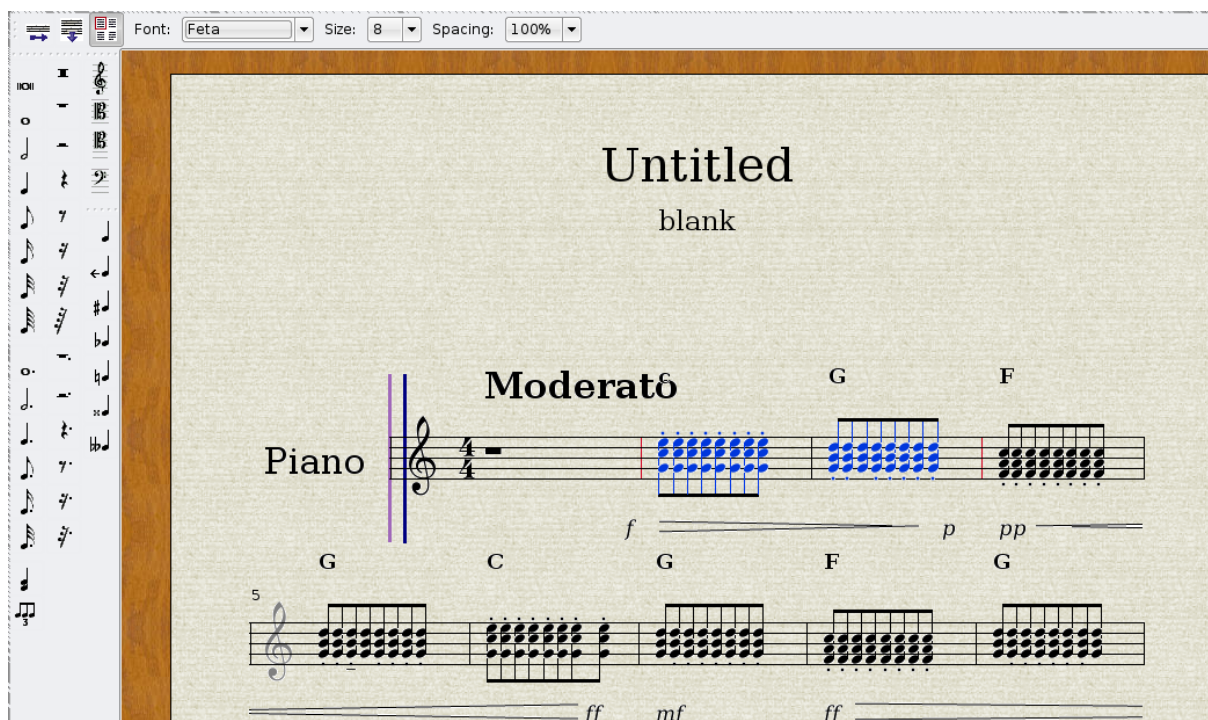
and then you just click here to put inn the marker. You see in the menu right that you have allot off poseibilities

Untitled

f *p* *pp*

ff *mf*

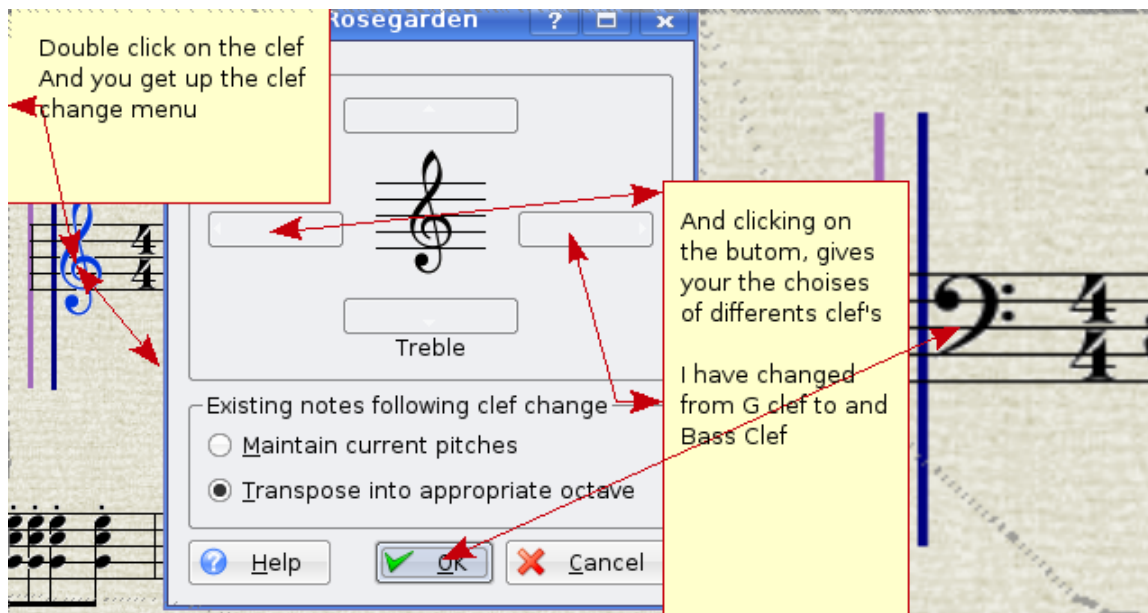
If you look at the right menu, there are many possibility to improve the informations on the notations, the only thing you have to remember is to mark those note this info should be apart of.



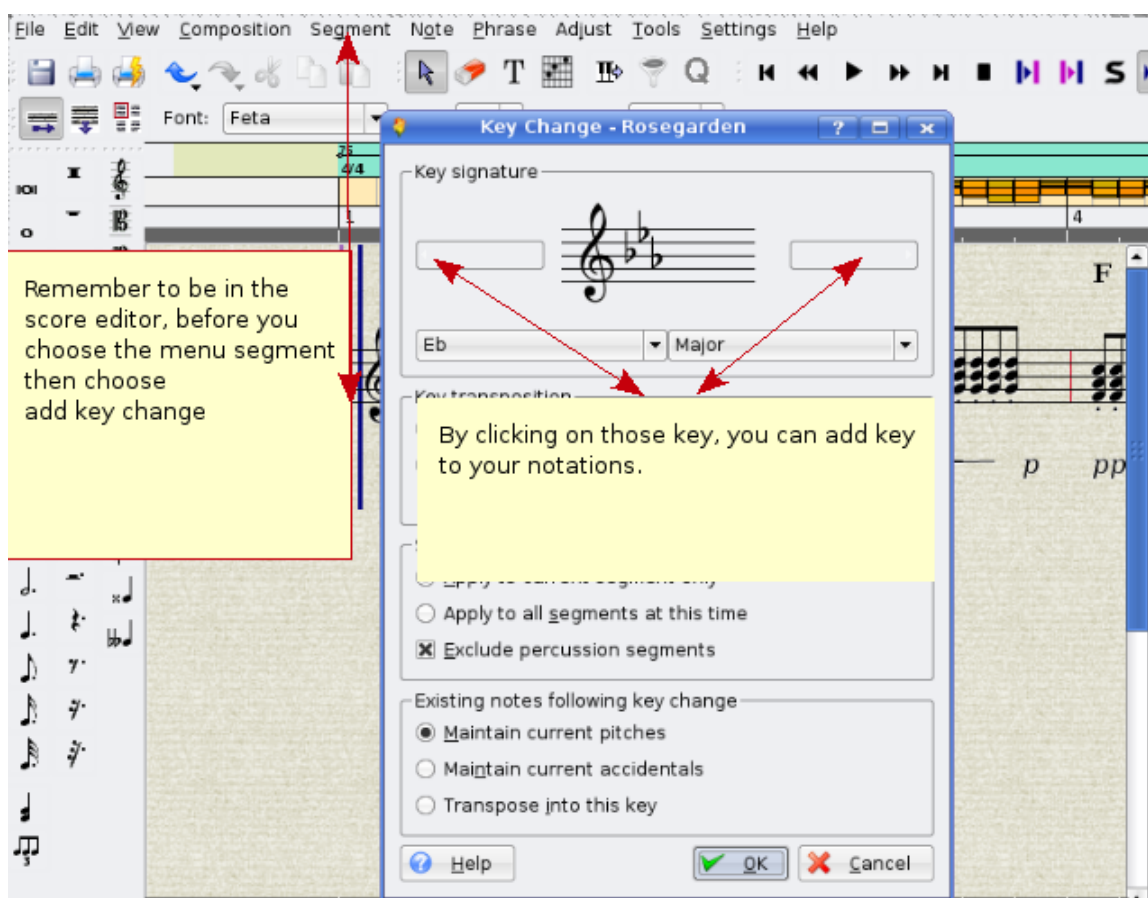
If you look on the left menu, you can put manually note, rest on you notations, you can also change the clef on the notations, below you see how.

7.2 how to change clef

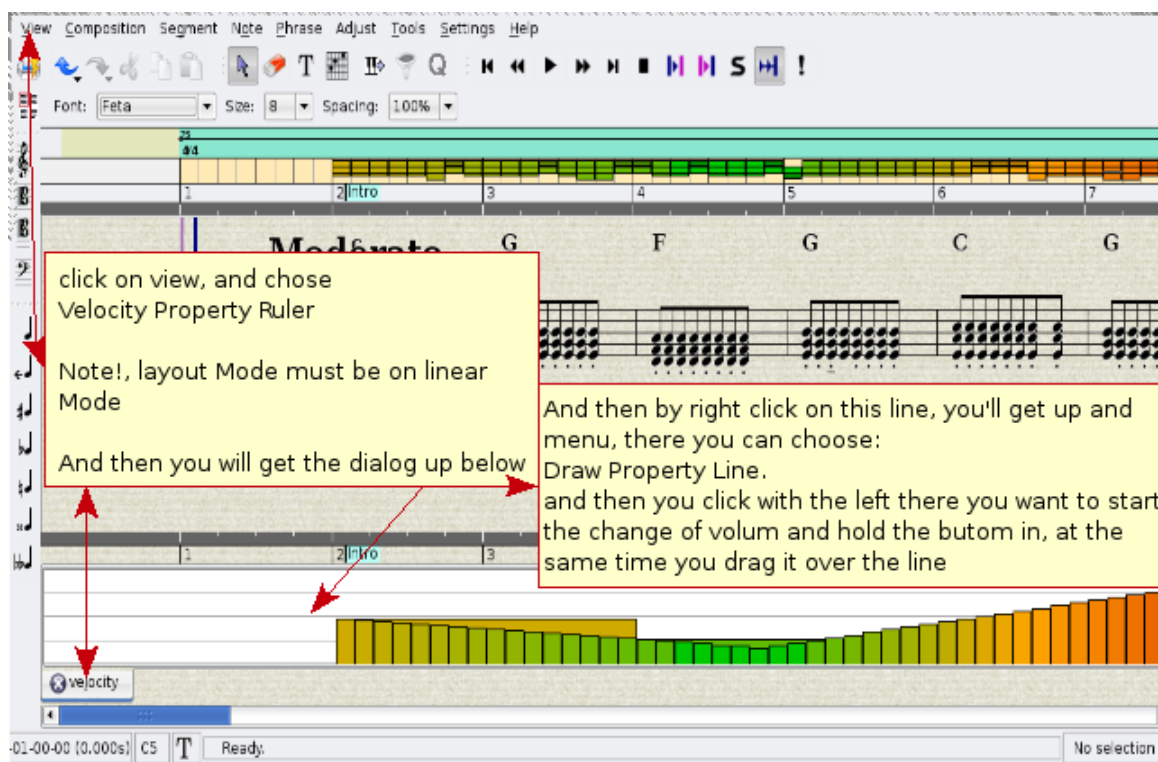
- Double click on the G clef, and a menu will pop up.



7.3 How to change key



7.4 how to change note volume on a recorded segment.



7.5 How to make the note play after your inserted marks in score editor

Take in use the Interpret functions

7.5.1 Interpret functions in the score editor

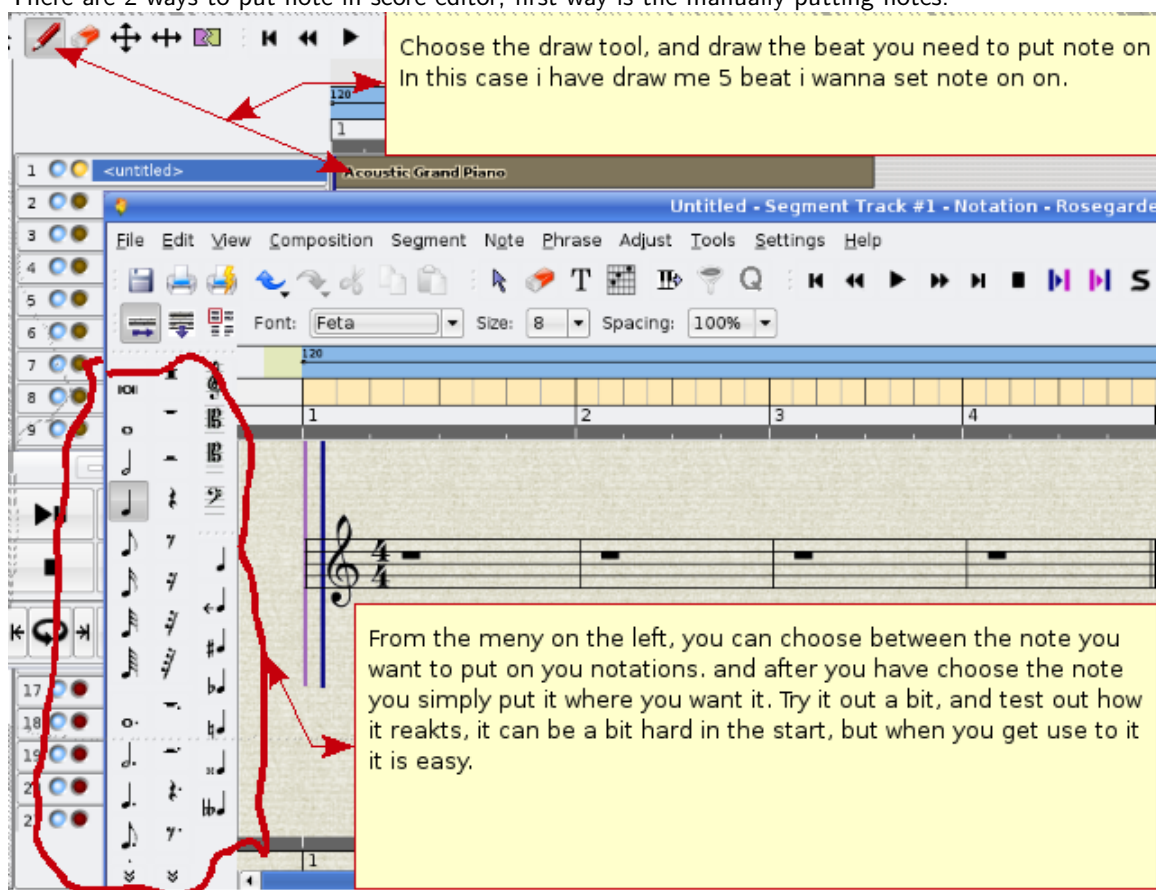
when you play on the synth/keyboard, specially when you want to play in a low volume (piano) this are not always easy, have the same note hardness on your accord, or you just want the music to play piano where it is piano, and forte where there is forte. You can put in those mark on the notations, and when you are finish with put in all the marks on your notations, and by right click in the score editor, and choose the "interpret" rosegarden will change the velocities, and notations play after the marks you have put on your notations.

7.6 How to split segment for grand staff

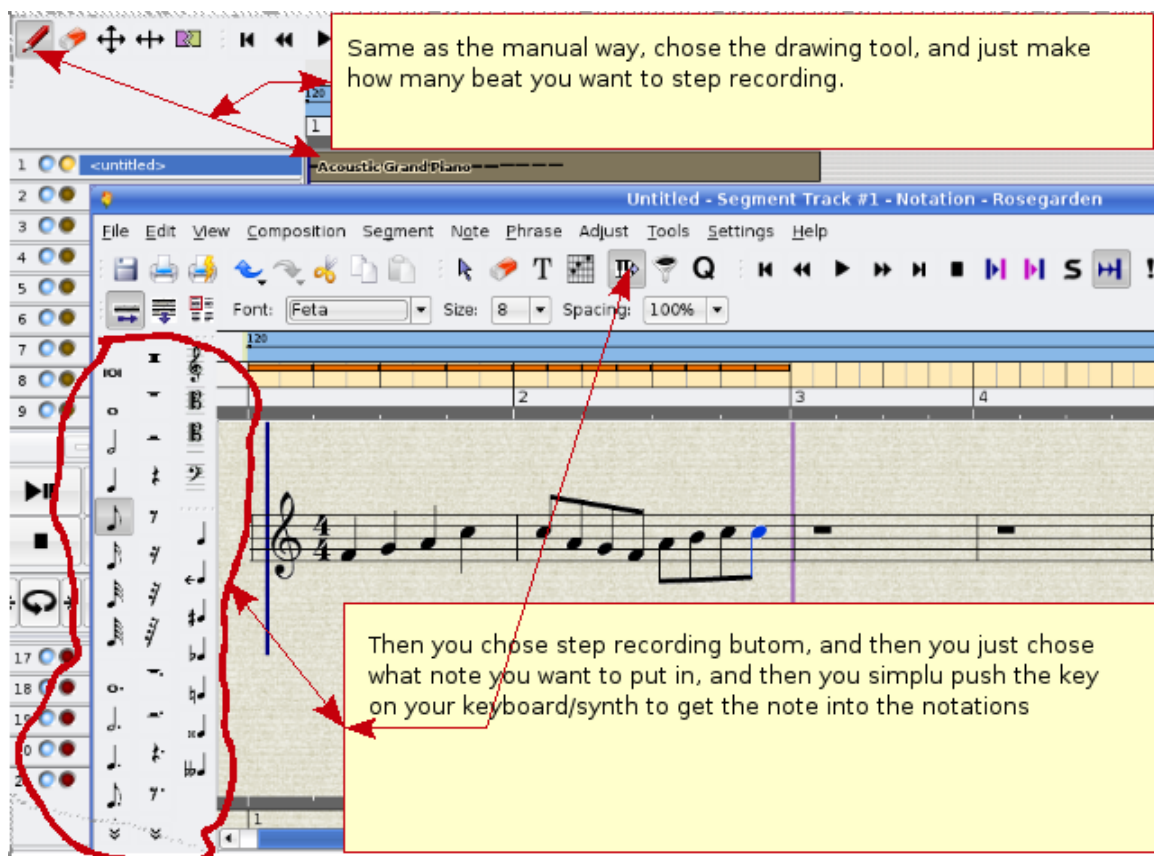
It is not possible yet, to display a piano segment in a dual system (grand staff). However [here is a detailed manual](#) on rendering such scores with [LilyPond](#). First step is to split a segment by pitch (This feature refers to [feature request 4932](#)).

7.7 Setting notes manually, and step recording

There are 2 ways to put note in score editor, first way is the manually putting notes.

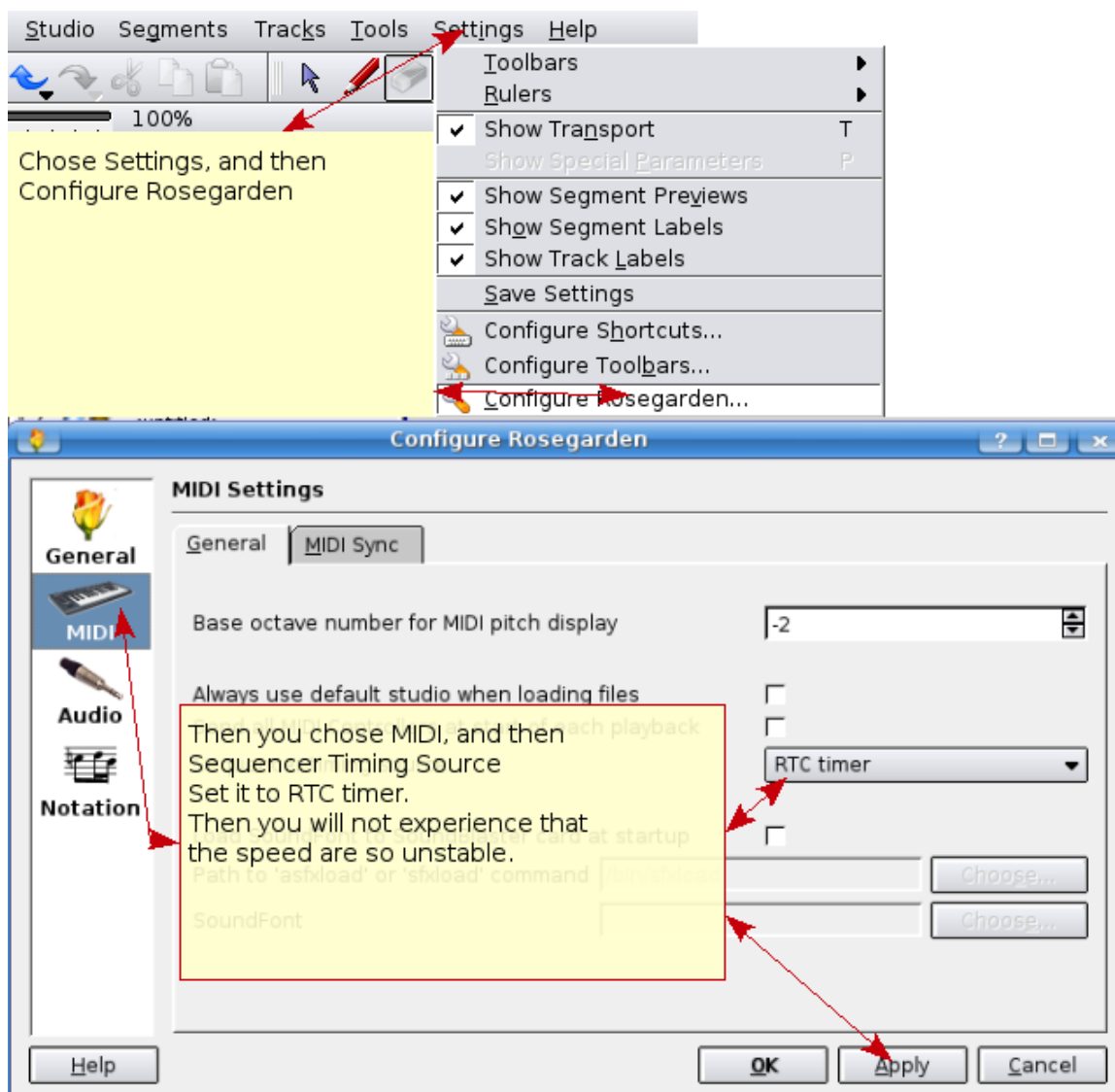


And you have the Step recording, that one is my favorite. And it could be a nice way for the student to learn what note and what key on the synth/keyboard the student have to push to get the note.



8 Rosegarden timer is unstable

If this is happening you could try to change the sequencer timer source.



9 how to change tempo in Rosegarden

That can be done several ways, I'm gonna show you the one I think is the best to use. if you right click on the line you see right under 120, the menu for tempo change will pop up.



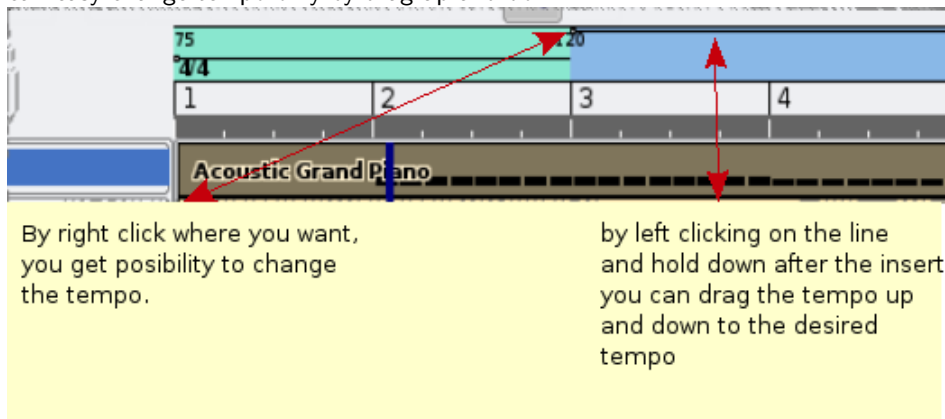
The menu is as following

1. Insert Tempo Change
2. Insert Tempo Change at Playback Position
3. Delete Tempo Change
4. Ramp Tempo to Next Tempo
5. Un-ramp Tempo
6. Edit Tempo

7. Edit Time Signature...
8. Open Tempo And Time Signature Editor

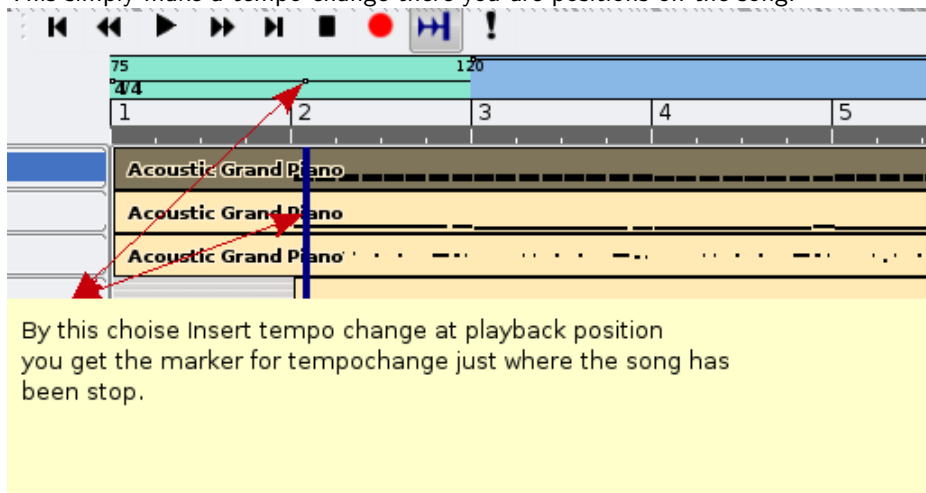
9.1 Insert Tempo Change

If you right click on the line there you want the tempo change, let's say with number 3, and then chose 'Insert Tempo Change' a dot with number 3 will shown up. And then left click and hold down after number 3, you can easy change tempo only by drag up and down.



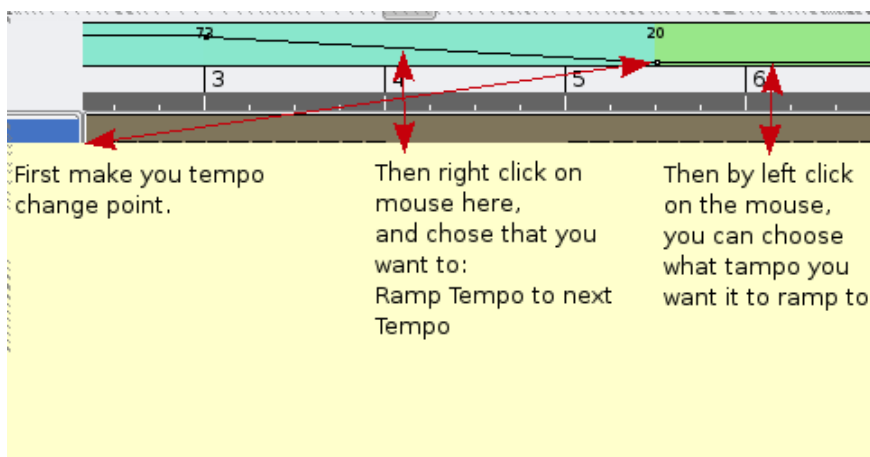
9.2 Insert Tempo Change at Playback Position

This simply make a tempo change there you are positions on the song.



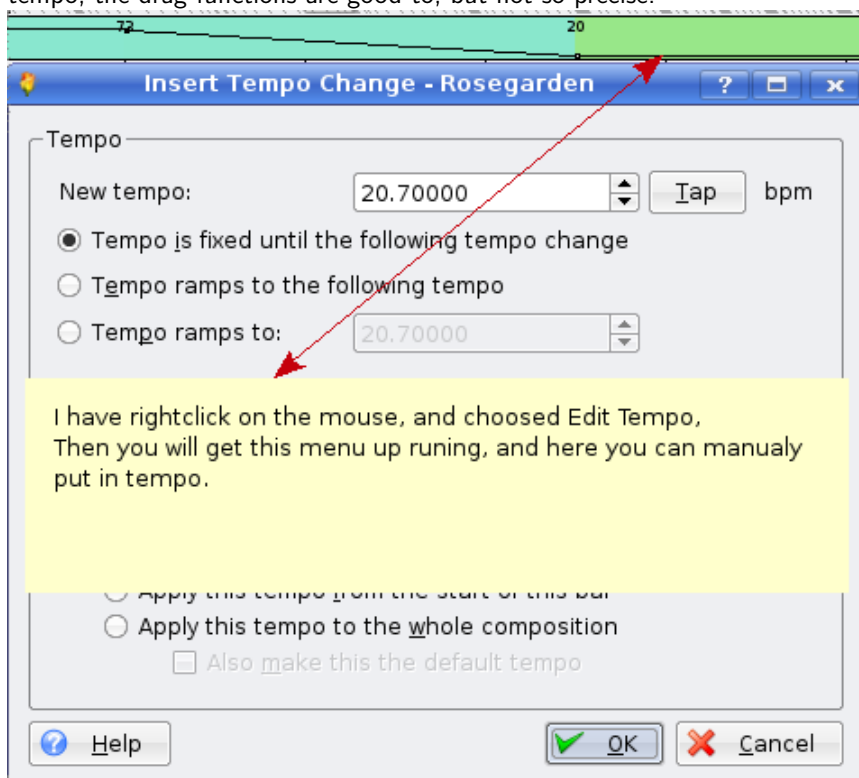
9.3 Ramp Tempo to Next Tempo

this is nice to use if you want a gradient tempo change, or reduce.



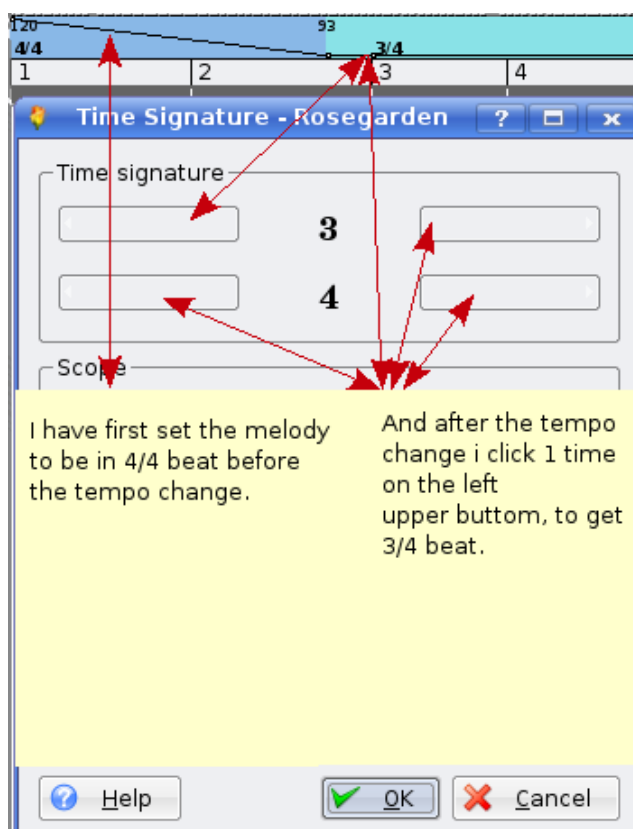
9.4 Edit Tempo

here you simply manually can type in what tempo you want, this is the best to use if you are after a special tempo, the drag functions are good to, but not so precise.

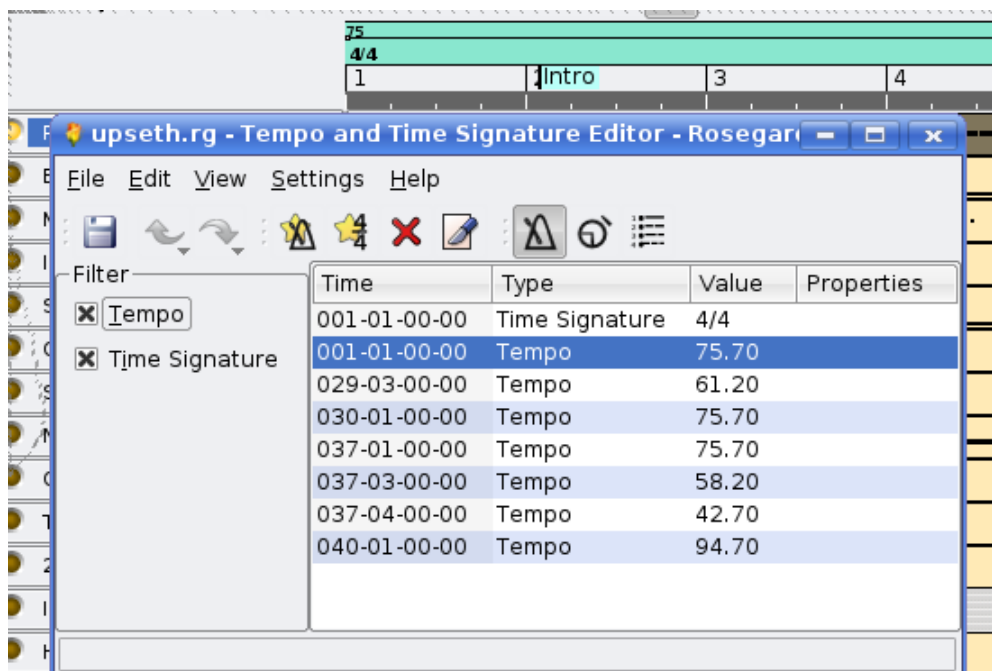


9.5 Edit Time Signature

this give you the possibility to change the beat on you melody, on my example, I have started up the song with 4/4 beat, and after the tempo change I have changed the song to 3/4 beat (wals).

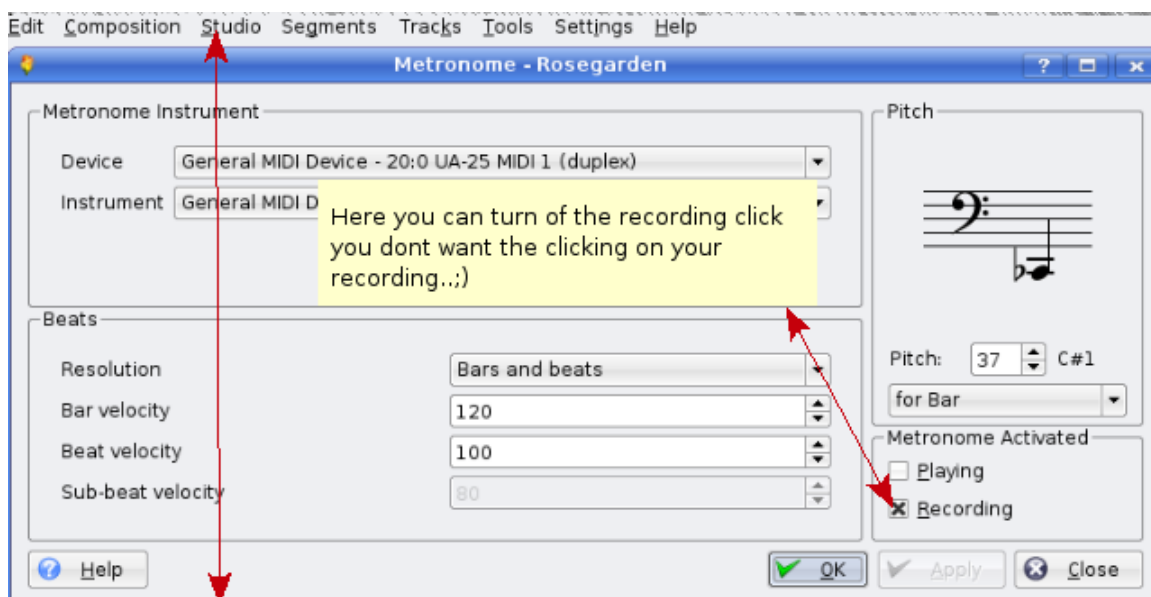


9.6 Open Tempo And Time Signature Editor



With this you manually can go into all you tempo change and beat change, and change to your liking

9.7 how to turn of metronome click



The fifth menu choise under studio, can you click on "Manage Metronome", This is for rosegarden 1.6.1.

Rosegarden before this have a diferent way.

First go on menu Composition, and the first choise there you have studio, and then you find the Manage metronome.

and the after you have done a successfully record of you midi song, you can add on some singing, real guitars, and so on, you have to be creative.:)

9.8 Music made with rosegarden

Here you have and example of music piece that have been made on rosegarden, I have got a friend of mine to play guitars.

arr/melody: Alf Tonny Bätz. Guitarist: Bjørn Nygård

Mp3 version

<http://alfton.gfxi.no/files/upseth.mp3>

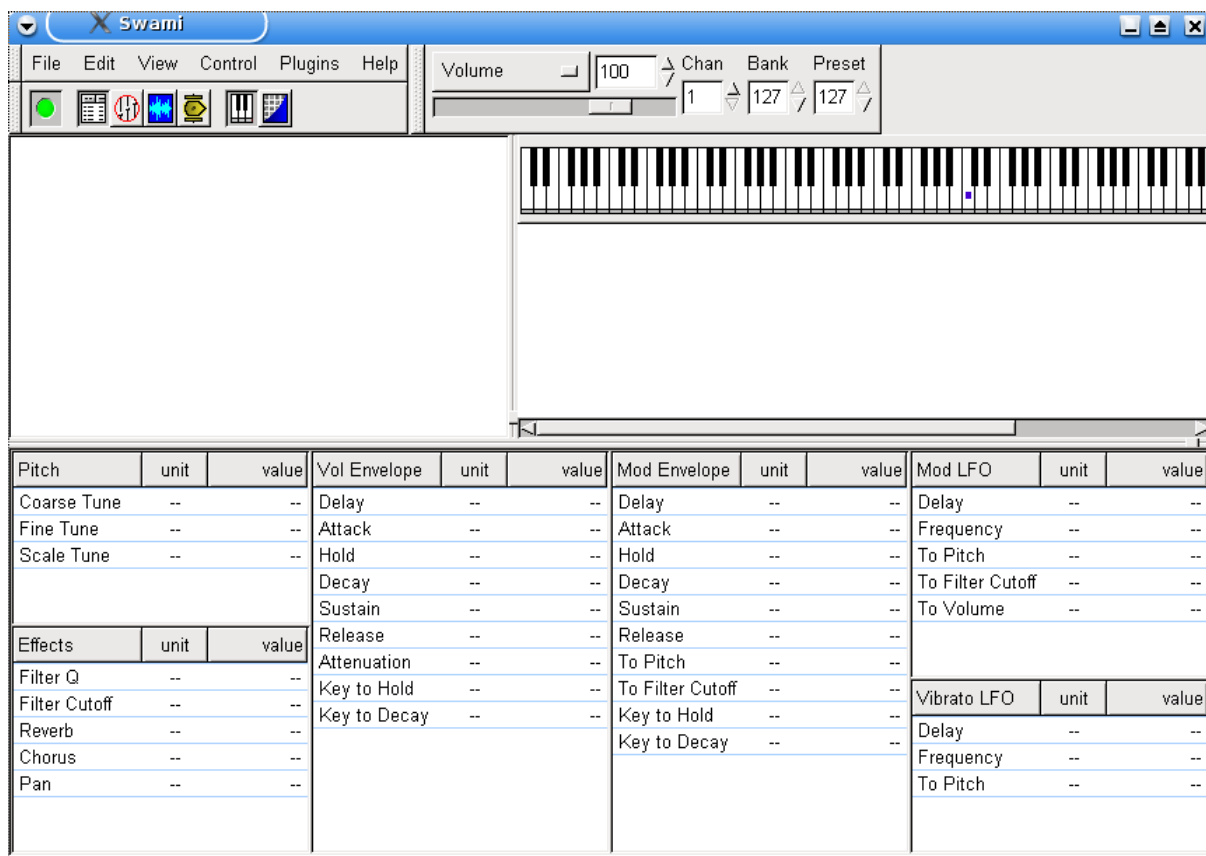
Midi version

<http://alfton.gfxi.no/files/upseth.mid>

10 Sound creation for your music project

Challenge your self, or your students to go out in the nature, or in house. Just find a sound to make (real sax, oboe, and so on), and take this in use with rosegarden. to achieve this you can take in use Swami (aptitude install swami) there are something you have to be aware of, after you have installed swami, at this moment the swami do not add a menu entry in multimedia, this I hope some day will be fixed, but until that day you have to start swami in console, or pres ALT + F2 and type swami.

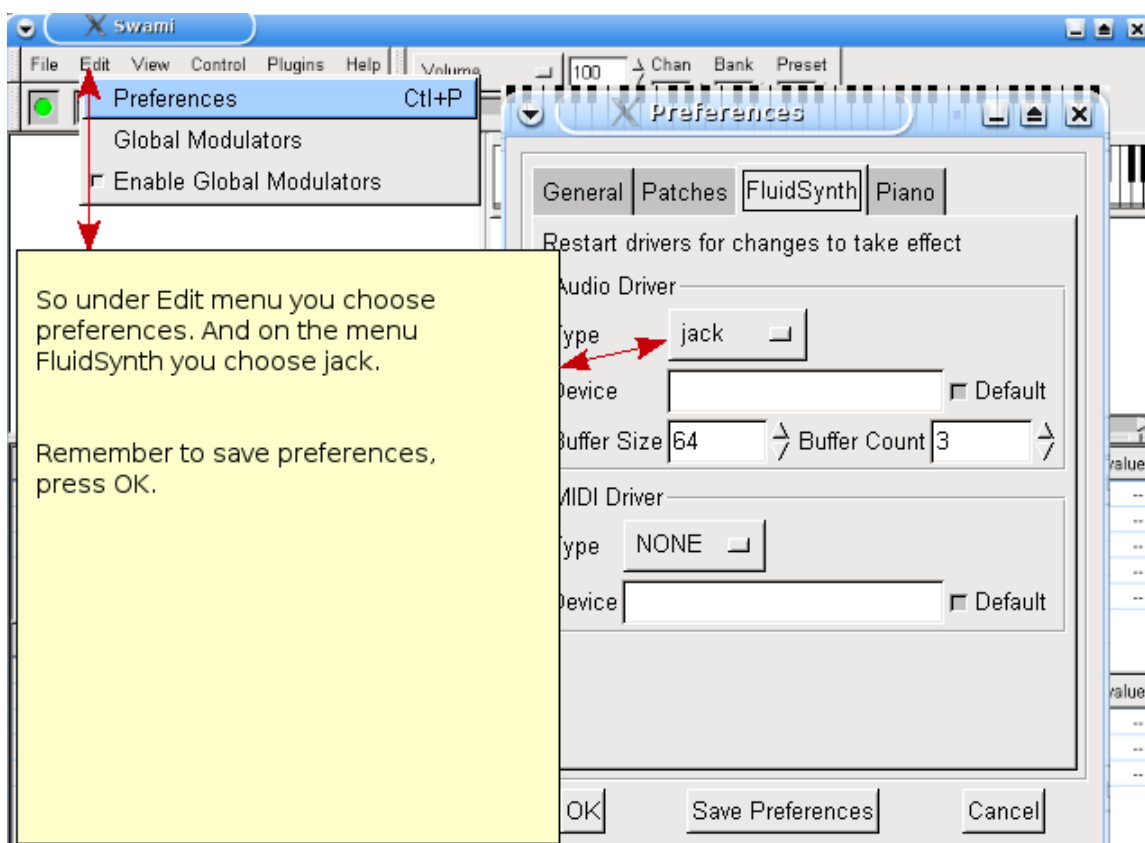
Swami have a nice GUI and looks like this:



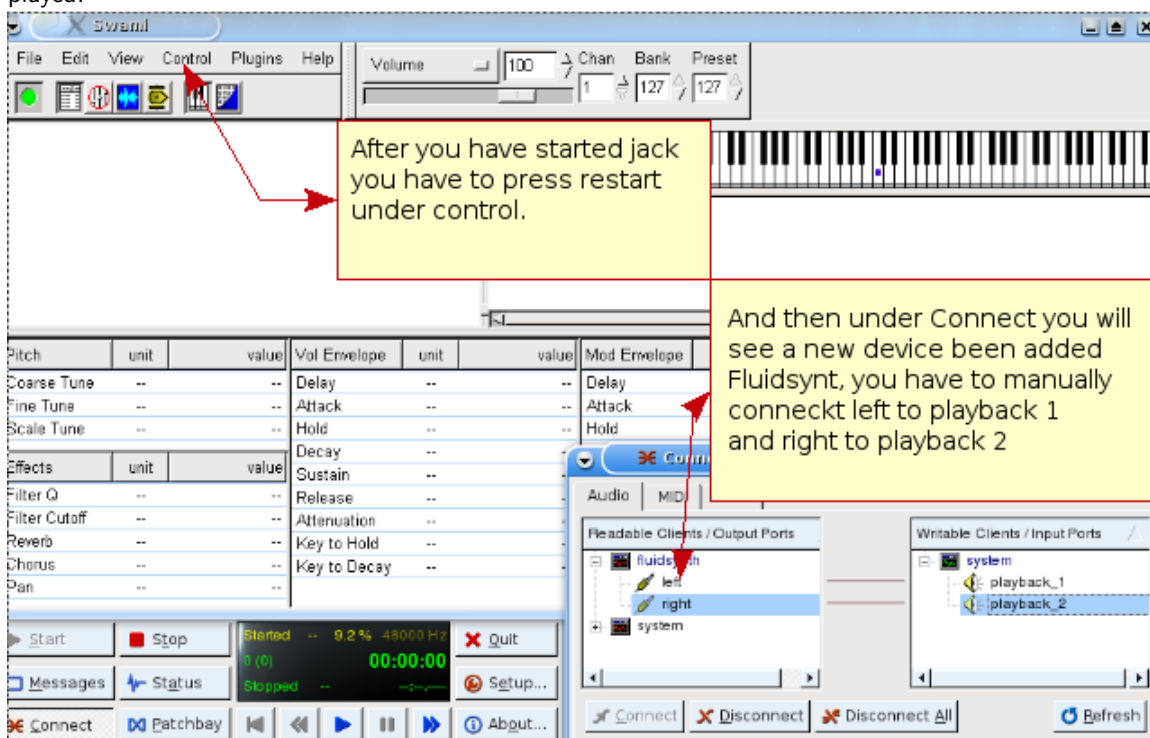
Swami at this moment are under development, so the version you have to use is abit old, but it works. The swami projekt can you take a look at here: <http://swami.resonance.org/trac>

10.1 Configuring Swami to use Jack

To make this work at the same time you have audacity, rosegarden running, you have to configure swami to use jack as a sound connector:



After that you have to start jackd you have to manually connect FluidSynth so you can hear what been played.



So now you are ready to start create your own sound to use with you musik project.

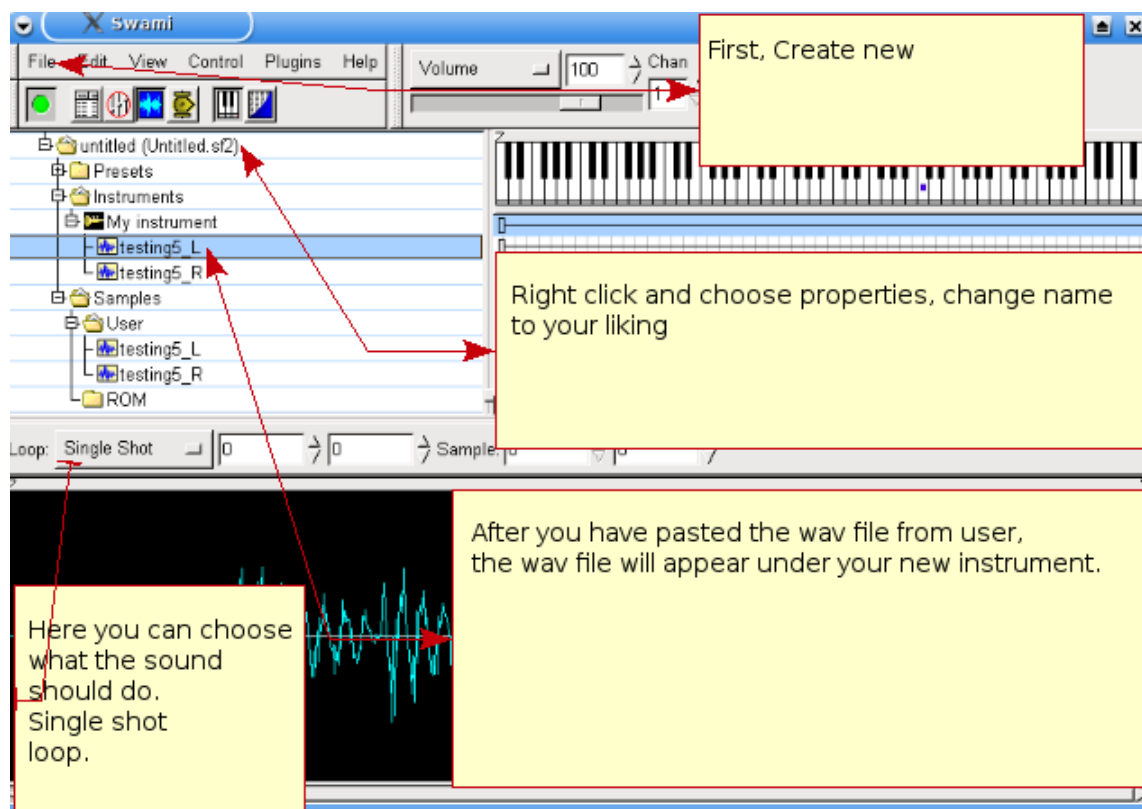
10.2 How to make a sound

How to make a sound? Here you have to use audacity to record something, for example scream, word, or some real instruments, when you have cleaned up your new sound, you can export this as and WAV file, and import this into swami. In swami you can connect that sound to a program change number, and at last export

your new sound as an SF2 file, and use fluidsynth-DSSI-plugin in rosegarden and take in use your brand new sound. Isn't that cool?

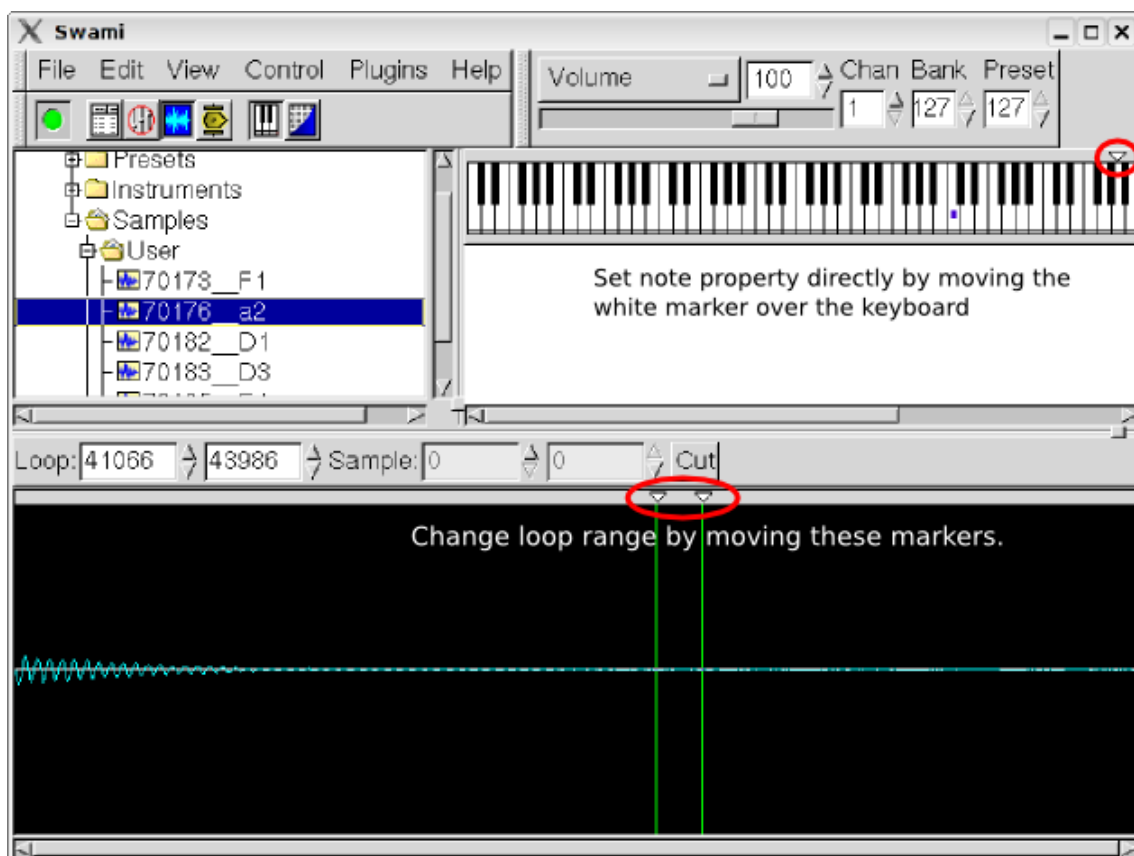
So lets go into this step by step.

1. File, create new
2. Right click on untitled, and choose Properties. (Rename it to your liking)
3. Click on the "+", and right click under Samples, and choose load sample (choose the wav files you want to use for your instrument)
4. Click on the "+" behind Samples, and User, there you see your wav file. In our case, there are two files, named L and R (Hint: file names are truncated to 10 characters)
5. Then click on Instrument, so it gets highlighted, then click right and choose New Instrument
6. Click on the "+" behind Instrument, and right click on New item, and choose properties and change name to your liking.
7. Then it's time to select the samples to be used for our new instrument: Mark them within Samples/User by holding down the control key while clicking. Afterwards, you can insert those samples at Instruments/Your Instrument by means of the Paste function in the context menu (right click). Your Samples have been assigned to the instrument name you made. (Hint: This works like a link; whenever you change sample properties, this will also take effect in your instrument.)



And just repeat the cyclus for each sound, and when you are finished, you just save it. And it's time to use it.

10.3 Sample Tuning for Advanced Users



When creating a chromatic instrument from a set of samples that cover different pitch ranges (bass, mids, trebles), further actions need to be done to make sure you get a continuous sound.

You will need information about what note is played in each sample. This reference note can be set either in sample properties, or you can simply move the white marker to the corresponding key. You can hear the effect instantly, when you click on the keyboard: The original pitch is played when you hit the reference note. From here it is bent up or down, depending on the distance you move right or left.

When you have set all reference notes for your samples, you should hear notes of the same pitch nonregarding what sample you select!

For continuous sounds (like organ, flute, strings), your samples can never be as long as the longest note that might be played when using your soundfont. Therefore it is necessary to define a loop range that is repeated over and over when the musician will keep a key pressed. Again, you can move two markers to find a section of constant amplitude - try to find zero crossings in the sample to prevent disturbing clicks.

[CategoryPermalink](#) [CategorySound](#)

11 Copyright and authors

This document is written and copyrighted by Alf Tonny Bätz (2008, 2009), Holger Levsen (2008) and is released under the GPL2 or any later version. Enjoy!

If you add content to it, **please only do so if you are the author of it and plan to release it under the same conditions!** Then add your name here and release it under the "GPL v2 or any later version" licence.

12 Translation copyright and authors

The Bokmål translation is copyrighted by Alf Tonny Bätz (2008), Tore Skogly (2008), Petter Reinholdtsen (2014) and Alexander Alemayhu (2014) and is released under the GPL v2 or any later version.

The French translation is copyrighted by Arnaud Bonvalle (2009), Thomas Vincent (2012) and the French I10n team (2012) and is released under the GPL v2 or any later version.

The Dutch translation is copyrighted by Frans Spiesschaert (2014) and is released under the GPL v2 or any later version.

The Spanish translation is copyrighted by Rafael Rivas (2011) and is released under the GPL v2 or any later version.

13 Translations of this document

Fully translated versions of this document are available in Norwegian Bokmål and French.

13.1 HowTo translate this document

As in many free software projects, translations of this document are kept in PO files. More information about the process can be found in `usr/share/doc/debian-edu-doc-en/README.rosegarden-manual-translations` for more information on this. The Git repository (see below) contains this file too. Take a look there if you want to help translating this document.

To commit your translations you need to be a member of the Alioth project `debian-edu`. If your Alioth username differs from your local one, create or edit `~/.ssh/config`. There should be an entry like:

```
Host git.debian.org
User <your-alioth-username>
```

Then check out the `debian-edu-doc` source using ssh access: `git clone git+ssh://git.debian.org/git/debian-edu/debian-edu-doc.git`

If you only want to translate, you just need to check out some files from from Git (which can be done anonymously) and create patches. Please file a bug against the `debian-edu-doc` package and attach the PO file to the [bugreport](#). You can find some [instructions on how to submit bugs](#) here.

You can check out the `debian-edu-doc` source anonymously with the following command (you need to have the `git` package installed for this to work):

- `git clone git://anonscm.debian.org/debian-edu/debian-edu-doc.git`

Then edit the file `documentation/rosegarden/rosegarden-manual.$CC.po` (replacing `$CC` with your language code). There are many tools for translating available; we suggest using `lokalize`.

Then you either commit the file directly to Git (if you have the rights to do so) or send the file to the [bugreport](#).

To update your local copy of the repository use the following command inside the `debian-edu-doc` directory:

- `git pull`

Read `/usr/share/doc/debian-edu-doc-en/README.rosegarden-manual-translations` to find information how to create a new PO file for your language if there isn't one yet, and how to update translations.

Please keep in mind that this manual is still under development, so don't translate any string which contains "FIXME".

Basic information about Alioth (the host where our Git repository is located) and Git is available at <http://wiki.debian.org/Alioth/Git>.

If you are new to Git, look at the [Pro Git](#) book; it has a chapter on the [recording changes to the repository](#). Also you might want to look at the `gitk` package that provides a GUI for Git.

Please report any problems.

14 Appendix A - The GNU Public License

Note to translators: there is no need to translate the GPL license text.

14.1 Rosegarden manual

Copyright (C) 2008, 2009 Alf Tonny Bätz < alfton@gmail.com > and others, see the [Copyright chapter](#) for the full list of copyright owners.

This program is free software; you can redistribute it and/or modify it under the terms of the GNU General Public License as published by the Free Software Foundation; either version 2 of the License, or (at your option) any later version.

This program is distributed in the hope that it will be useful, but WITHOUT ANY WARRANTY; without even the implied warranty of MERCHANTABILITY or FITNESS FOR A PARTICULAR PURPOSE. See the GNU General Public License for more details.

You should have received a copy of the GNU General Public License along with this program; if not, write to the Free Software Foundation, Inc., 51 Franklin Street, Fifth Floor, Boston, MA 02110-1301 USA.

14.2 GNU GENERAL PUBLIC LICENSE

Version 2, June 1991

Copyright (C) 1989, 1991 Free Software Foundation, Inc. 51 Franklin Street, Fifth Floor, Boston, MA 02110-1301, USA. Everyone is permitted to copy and distribute verbatim copies of this license document, but changing it is not allowed.

14.3 TERMS AND CONDITIONS FOR COPYING, DISTRIBUTION AND MODIFICATION

0. This License applies to any program or other work which contains a notice placed by the copyright holder saying it may be distributed under the terms of this General Public License. The "Program", below, refers to any such program or work, and a "work based on the Program" means either the Program or any derivative work under copyright law: that is to say, a work containing the Program or a portion of it, either verbatim or with modifications and/or translated into another language. (Hereinafter, translation is included without limitation in the term "modification".) Each licensee is addressed as "you".

Activities other than copying, distribution and modification are not covered by this License; they are outside its scope. The act of running the Program is not restricted, and the output from the Program is covered only if its contents constitute a work based on the Program (independent of having been made by running the Program). Whether that is true depends on what the Program does.

1. You may copy and distribute verbatim copies of the Program's source code as you receive it, in any medium, provided that you conspicuously and appropriately publish on each copy an appropriate copyright notice and disclaimer of warranty; keep intact all the notices that refer to this License and to the absence of any warranty; and give any other recipients of the Program a copy of this License along with the Program.

You may charge a fee for the physical act of transferring a copy, and you may at your option offer warranty protection in exchange for a fee.

2. You may modify your copy or copies of the Program or any portion of it, thus forming a work based on the Program, and copy and distribute such modifications or work under the terms of Section 1 above, provided that you also meet all of these conditions:

- **a)** You must cause the modified files to carry prominent notices stating that you changed the files and the date of any change.
- **b)** You must cause any work that you distribute or publish, that in whole or in part contains or is derived from the Program or any part thereof, to be licensed as a whole at no charge to all third parties under the terms of this License.
- **c)** If the modified program normally reads commands interactively when run, you must cause it, when started running for such interactive use in the most ordinary way, to print or display an announcement including an appropriate copyright notice and a notice that there is no warranty (or else, saying that you provide a warranty) and that users may redistribute the program under these conditions, and telling the user how to view a copy of this License. (Exception: if the Program itself is interactive but does not normally print such an announcement, your work based on the Program is not required to print an announcement.)

These requirements apply to the modified work as a whole. If identifiable sections of that work are not derived from the Program, and can be reasonably considered independent and separate works in themselves, then this License, and its terms, do not apply to those sections when you distribute them as separate works. But when you distribute the same sections as part of a whole which is a work based on the Program, the distribution of the whole must be on the terms of this License, whose permissions for other licensees extend to the entire whole, and thus to each and every part regardless of who wrote it.

Thus, it is not the intent of this section to claim rights or contest your rights to work written entirely by you; rather, the intent is to exercise the right to control the distribution of derivative or collective works based on the Program.

In addition, mere aggregation of another work not based on the Program with the Program (or with a work based on the Program) on a volume of a storage or distribution medium does not bring the other work under the scope of this License.

3. You may copy and distribute the Program (or a work based on it, under Section 2) in object code or executable form under the terms of Sections 1 and 2 above provided that you also do one of the following:

- a) Accompany it with the complete corresponding machine-readable source code, which must be distributed under the terms of Sections 1 and 2 above on a medium customarily used for software interchange; or,
- b) Accompany it with a written offer, valid for at least three years, to give any third party, for a charge no more than your cost of physically performing source distribution, a complete machine-readable copy of the corresponding source code, to be distributed under the terms of Sections 1 and 2 above on a medium customarily used for software interchange; or,
- c) Accompany it with the information you received as to the offer to distribute corresponding source code. (This alternative is allowed only for noncommercial distribution and only if you received the program in object code or executable form with such an offer, in accord with Subsection b above.)

The source code for a work means the preferred form of the work for making modifications to it. For an executable work, complete source code means all the source code for all modules it contains, plus any associated interface definition files, plus the scripts used to control compilation and installation of the executable. However, as a special exception, the source code distributed need not include anything that is normally distributed (in either source or binary form) with the major components (compiler, kernel, and so on) of the operating system on which the executable runs, unless that component itself accompanies the executable.

If distribution of executable or object code is made by offering access to copy from a designated place, then offering equivalent access to copy the source code from the same place counts as distribution of the source code, even though third parties are not compelled to copy the source along with the object code.

4. You may not copy, modify, sublicense, or distribute the Program except as expressly provided under this License. Any attempt otherwise to copy, modify, sublicense or distribute the Program is void, and will automatically terminate your rights under this License. However, parties who have received copies, or rights, from you under this License will not have their licenses terminated so long as such parties remain in full compliance.

5. You are not required to accept this License, since you have not signed it. However, nothing else grants you permission to modify or distribute the Program or its derivative works. These actions are prohibited by law if you do not accept this License. Therefore, by modifying or distributing the Program (or any work based on the Program), you indicate your acceptance of this License to do so, and all its terms and conditions for copying, distributing or modifying the Program or works based on it.

6. Each time you redistribute the Program (or any work based on the Program), the recipient automatically receives a license from the original licensor to copy, distribute or modify the Program subject to these terms and conditions. You may not impose any further restrictions on the recipients' exercise of the rights granted herein. You are not responsible for enforcing compliance by third parties to this License.

7. If, as a consequence of a court judgment or allegation of patent infringement or for any other reason (not limited to patent issues), conditions are imposed on you (whether by court order, agreement or otherwise) that contradict the conditions of this License, they do not excuse you from the conditions of this License. If you cannot distribute so as to satisfy simultaneously your obligations under this License and any other pertinent obligations, then as a consequence you may not distribute the Program at all. For example, if a patent license would not permit royalty-free redistribution of the Program by all those who receive copies directly or indirectly through you, then the only way you could satisfy both it and this License would be to refrain entirely from distribution of the Program.

If any portion of this section is held invalid or unenforceable under any particular circumstance, the balance of the section is intended to apply and the section as a whole is intended to apply in other circumstances.

It is not the purpose of this section to induce you to infringe any patents or other property right claims or to contest validity of any such claims; this section has the sole purpose of protecting the integrity of the free software distribution system, which is implemented by public license practices. Many people have made generous contributions to the wide range of software distributed through that system in reliance on consistent application of that system; it is up to the author/donor to decide if he or she is willing to distribute software through any other system and a licensee cannot impose that choice.

This section is intended to make thoroughly clear what is believed to be a consequence of the rest of this License.

8. If the distribution and/or use of the Program is restricted in certain countries either by patents or by copyrighted interfaces, the original copyright holder who places the Program under this License may add an explicit geographical distribution limitation excluding those countries, so that distribution is permitted only in or among countries not thus excluded. In such case, this License incorporates the limitation as if written in the body of this License.

9. The Free Software Foundation may publish revised and/or new versions of the General Public License from time to time. Such new versions will be similar in spirit to the present version, but may differ in detail to address new problems or concerns.

Each version is given a distinguishing version number. If the Program specifies a version number of this License which applies to it and "any later version", you have the option of following the terms and conditions either of that version or of any later version published by the Free Software Foundation. If the Program does not specify a version number of this License, you may choose any version ever published by the Free Software Foundation.

10. If you wish to incorporate parts of the Program into other free programs whose distribution conditions are different, write to the author to ask for permission. For software which is copyrighted by the Free Software Foundation, write to the Free Software Foundation; we sometimes make exceptions for this. Our decision will be guided by the two goals of preserving the free status of all derivatives of our free software and of promoting the sharing and reuse of software generally.

NO WARRANTY

11. BECAUSE THE PROGRAM IS LICENSED FREE OF CHARGE, THERE IS NO WARRANTY FOR THE PROGRAM, TO THE EXTENT PERMITTED BY APPLICABLE LAW. EXCEPT WHEN OTHERWISE STATED IN WRITING THE COPYRIGHT HOLDERS AND/OR OTHER PARTIES PROVIDE THE PROGRAM "AS IS" WITHOUT WARRANTY OF ANY KIND, EITHER EXPRESSED OR IMPLIED, INCLUDING, BUT NOT LIMITED TO, THE IMPLIED WARRANTIES OF MERCHANTABILITY AND FITNESS FOR A PARTICULAR PURPOSE. THE ENTIRE RISK AS TO THE QUALITY AND PERFORMANCE OF THE PROGRAM IS WITH YOU. SHOULD THE PROGRAM PROVE DEFECTIVE, YOU ASSUME THE COST OF ALL NECESSARY SERVICING, REPAIR OR CORRECTION.

12. IN NO EVENT UNLESS REQUIRED BY APPLICABLE LAW OR AGREED TO IN WRITING WILL ANY COPYRIGHT HOLDER, OR ANY OTHER PARTY WHO MAY MODIFY AND/OR REDISTRIBUTE THE PROGRAM AS PERMITTED ABOVE, BE LIABLE TO YOU FOR DAMAGES, INCLUDING ANY GENERAL, SPECIAL, INCIDENTAL OR CONSEQUENTIAL DAMAGES ARISING OUT OF THE USE OR INABILITY TO USE THE PROGRAM (INCLUDING BUT NOT LIMITED TO LOSS OF DATA OR DATA BEING RENDERED INACCURATE OR LOSSES SUSTAINED BY YOU OR THIRD PARTIES OR A FAILURE OF THE PROGRAM TO OPERATE WITH ANY OTHER PROGRAMS), EVEN IF SUCH HOLDER OR OTHER PARTY HAS BEEN ADVISED OF THE POSSIBILITY OF SUCH DAMAGES.

END OF TERMS AND CONDITIONS